



NEWSLETTER OF THE WESTERN PSYCHOLOGICAL ASSOCIATION

# WESTERN PSYCHOLOGIST



AUGUST 2015 | VOLUME 31 | NO. 1 | WESTERNPSYCH.ORG

# IN THIS ISSUE

Welcome Message from WPA President . . . . .	3
WPA 2016 Convention: Mark Your Calendars!. . . . .	4
Submission Deadline: November 15 . . . . .	4
WPA People News . . . . .	5
Joan Tucker WPA President-Elect. . . . .	5
Kim Barchard WPA Representative-at-Large . . . . .	5
Terry Cronan Receives 2015 WPA Teaching Award . . . . .	6
Jason Holland Receives 2015 Early Career Research Award . . . . .	7
Heidi Riggio Recognized for Service to WPA . . . . .	7
Peter Bentler Recognized with WPA Lifetime Achievement Award . . . . .	8
2015 Social Responsibility Award To Dacher Keltner . . . . .	9
Enrico E. Jones Clinical Psychology Research Award To Joyce Chu. . . . .	10
2016 Multivariate Software Award: . . . . .	16
Call for Nominations. . . . .	16
Nominations Sought For WPA Awards . . . . .	16
New WPA Fellows Announced . . . . .	17
2015 WPA Convention Featured Outstanding Program in Las Vegas . . . . .	11
2015 WPA Student Research Award Winners . . . . .	13
2015 WPA Film Festival Winners . . . . .	14
Terman Teaching Conference . . . . .	15
2016 Nominations Sought . . . . .	16
WPA Announcements . . . . .	17
Renew or Join WPA Now . . . . .	17



# *Welcome Message from WPA President*

**Howard Friedman**



It is a pleasure and honor to serve as President of the Western Psychological Association. The WPA has much to offer to strengthen teaching, research, learning and service in psychology. We invite you to join with us in further developing our organization in its 95th year!

Why do we need a regional association in a super-linked world of 777s, Teslas, Skype, Facetime, and Google Scholar? Simply put, the WPA annual conference is inspirational. It is the best venue for undergraduate and graduate psychology students (including first generation college students) in the West to meet and interact directly with top psychology professors, in a collegial atmosphere. It is also a great way to exchange information about teaching, graduate training, and postdoctoral opportunities. Finally, of course, the WPA facilitates the sharing of cutting-edge developments and discoveries in our field. But we can do more.

I am working to help us take advantage of our geographical proximities to enable visits and lectures and exchanges of materials among our members. We are organizing a speakers bureau exchange so that those of us who have something to say can make this known to those nearby who might want to invite a colloquium speaker or a guest lecturer. Along with this, we are encouraging the direct exchange of information among WPA members through on-line contacts. Students should check out the Western Psychological Association Facebook Group that Ryan Stoll has been helping develop.

Start thinking about our Long Beach convention (Thursday April 28 to Sunday May 1, 2016), with its ocean-view hotels and dynamism of the beach cities area. Some of the fantastic speakers lined up so far include Michael Shermer, Elizabeth Loftus, Sonja Lyubomirsky, Jean Twenge, Dacher Keltner, Philip Zimbardo, Nancy Segal, Roxane Cohen Silver, Sara Mednick, Ronald Riggio, and many more—some of the most fascinating research in psychology today. There may be some surprises as well. Long Beach is easily accessible via four airports, five major freeways, various trains, and even cruise or cargo ships if you are so inclined. We will be continuing our valuable series of Statistics Workshops (free to convention attendees), as well as our film festival, our Terman teaching conference, and our many Continuing Education offerings (CE credit).

Stay in touch. If you are a faculty member, you can volunteer as a WPA representative (liaison) of your campus by contacting Professor Kimberly Barchard [kim.barchard@unlv.edu](mailto:kim.barchard@unlv.edu). Kim is the newly-elected Member-at-Large (Chair of our Council of Reps) and has many ideas to move things forward.

In 1921, Lewis Terman was the founding President of the WPA. It had eight members. That same year, he was studying hundreds of bright California children. I recently interviewed some of them (yes they are over age 100), and I plan to report to you some 9-decade test-retest personality data. Let's keep building on the excellent traditions of the WPA.

Howard Friedman  
*Department of Psychology*  
*University of California, Riverside.*



## WPA 2016 Convention: Mark Your Calendars!

*Ninety-sixth Annual Convention*

*You're Invited*

APRIL 28 - MAY 1, 2016

*Westin Long Beach, California*

The 2016 WPA convention is scheduled for April 28 - May 1 at the Westin Long Beach on Ocean Blvd in Long Beach, California. The Terman Teaching Conference will be Wednesday, April 27. The convention host is California State University, Fullerton. Melinda Blackman is Program Chair.

Our distinguished speakers will include Elizabeth Loftus, Michael Shermer, Sonja Lyubomirsky, Roxane Cohen-Silver, Dacher Keltner, Howard Friedman, Nancy Segal, Jean Twenge, Phillip Zimbardo, Terry Cronan, Allen Gottfried, Peter Ditto, Leslie Martin, Sara Mednick, Ron Riggio, Jason Holland, and Joyce Chu, with more to be announced soon on the WPA website.

Begin planning to submit your research to the program and attending the convention in 2016. The Call for Proposals with detailed instructions for submitting is on the [WPA website](#).

Submission  
Deadline:  
November 16





### **Joan Tucker WPA President-Elect**

Joan Tucker is the new President-Elect of WPA. She will serve as President for the 2017 convention in Sacramento. Dr. Tucker is a Los Angeles native and pursued her education locally, receiving her B.A. at UC Irvine, M.A. at CSU Fullerton, and Ph.D. at UC Riverside. Her first job after graduate school was at Brandeis University. She returned to Los Angeles in 1999 and joined the RAND Corporation (sometimes referred to as the original “think tank”). She is currently a Senior Behavioral Scientist at RAND and Professor in the Pardee RAND Graduate School. The RAND Corporation is a nonprofit, nonpartisan research organization that develops solutions to public policy challenges to help make communities throughout the world safer and more secure, healthier and more prosperous. Her research primarily focuses on developing and empirically evaluating programs for at-risk youth and adults to prevent or reduce substance use, sexual risk behavior, and related negative consequences. This work leads her to work with diverse populations including unaccompanied homeless youth, impoverished women residing in emergency shelters, people living with HIV/AIDS, and families dealing with severe parent-child conflict and child behavioral problems.

Joan is a long time member of WPA. She joined WPA as a graduate student nearly 30 years ago, and proudly presented results from her Master’s thesis at the 1988 WPA convention (supported by a WPA student travel award!). “Attending my first WPA convention was a thrilling educational experience and helped inspire me to continue pursuing a career in psychology – as it does for countless other undergraduate and graduate students each year. The annual WPA convention, and the organization as a whole, affords students and professionals alike valuable opportunities for professional development and to contribute to a regional community supportive of psychological research and scholarship.” As WPA President, she is committed to building on the many strengths of WPA as a regional psychological association.



### **Kim Barchard WPA Representative-at-Large**

Dr. Kimberly A. Barchard is the new WPA Representative-at-Large. Kim is Associate Professor of Psychology at the University of Nevada, Las Vegas. She earned a BA in psychology in 1993 with a minor in statistics and her PhD in psychometrics in 2001. She describes the focus of her professional life – her research, teaching, and service – as empowering others. In her research, Kim designs new statistical techniques, psychological tests, and computer programs that others can freely use for their own research. In her teaching, she empowers students to conduct studies, analyze data, and present their results. She does this both in graduate and undergraduate courses, as well as in her research lab, which consists of 15-20 students each semester. In addition, Kim consults individually with professionals, faculty, and students to assist them with their study designs



and analyses, chairs one of the UNLV graduate areas, and serves on graduate and undergraduate student committees. She is an active editor for *Emotion Review*.

Kim is a longtime member of WPA – she has attended WPA for 14 years and presented over 120 posters and symposia. She contributes to the Council of Representatives and serves as a member of the Program Review Committee. She was Program Co-Chair for the 2015 conference. The WPA board welcomes Dr. Barchard and looks forward to working with her as she begins her term of office. The board also thanks Dr. John Moritsugu for serving as Representative-at-Large for the past three years.



### **Terry Cronan** Receives 2015 WPA Teaching Award

Dr. Theresa A. Cronan is Professor of Psychology at San Diego State University. Dr. Cronan earned her B.A. and M.A. degrees in psychology at San Diego State University, and completed her doctoral studies at Michigan State University. She has received over 12 million dollars in grant funding over the years, published 80 articles in peer-reviewed journals, and authored over 300 conference presentations, almost all of them with student co-authors. She has taken hundreds of students to WPA, where several have won awards.

Over the years Dr. Cronan has sought and secured funding to support several high quality mentoring programs, including a special program for minority students and training Head Start mothers how to teach their children to read. For ten years she was director of the SDSU Career Opportunities in Research (COR) program. COR was a program funded by the NIMH with the goal of providing undergraduates of mainly disadvantaged groups the preparation needed for success in applying to and participating in graduate education in psychology and related fields. COR was transformative for many students because Dr. Cronan, via instruction as well as example, welcomed them as colleagues and co-workers. Several of her students have gone on to careers as university professors, and one was given an award by the US President.

Dr. Cronan is loved by her students, both from COR and from her research lab, because she focuses not only on their academic pursuits, but also on their lives outside the lab. For example, she makes a cake for every student's birthday, gives the shower if a student is getting married or about to give birth, and generally treats them all as loving family. Every year she hosts a Christmas party for all her students, COR and lab students alike, to which she invites former students and mentees from the San Diego area who have continued on in psychology and are working in the field. As one student noted: "Dr. Cronan is without a doubt the most inspiring, committed teacher and mentor I have ever known." Professor Cronan has been recognized for her outstanding teaching and mentoring with multiple awards including the National Institute of Mental Health Wayne S. Fenton Undergraduate Research Educator Award.

In sum, Dr. Cronan is a model for what a teacher, researcher, and mentor should be. We are pleased to recognize her with the 2015 WPA Outstanding Teaching Award.



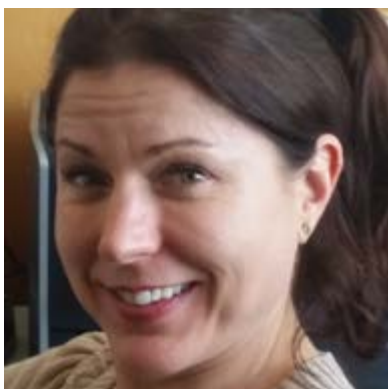


### **Jason Holland** Receives 2015 Early Career Research Award

Dr. Jason Holland is Assistant Professor of Psychology at the University of Nevada, Las Vegas. He received his Ph.D. in Clinical Psychology from the University of Memphis in 2008. Prior to accepting the position at UNLV, he held a Postdoctoral Research Fellowship at the VA Palo Alto Health Care System, Stanford University School of Medicine, and was Visiting Assistant Professor in the Department of Psychiatry and Behavioral Sciences at the Stanford University School of Medicine. He teaches statistics, psychology of aging, adult intervention, and he is a clinical supervisor.

Dr. Holland has in press or already published 52 peer-reviewed articles and eight book chapters. He also has 10 manuscripts under review, a first-authored book under contract with Routledge, and two ongoing grant-funded research projects. He has developed and tested several instruments that aim to better capture the implications of stressful and traumatic experiences on one's sense of meaning in life, spirituality, and perception of morality.

Dr. Holland's research is timely and already impactful. Given the rapid growth of older adults as a demographic group in the U.S, the WDepartment of Health and Human Services has identified "supporting older adults and their caregivers" as a national healthcare priority. Much of Dr. Holland's research is designed to improve interventions and clinical assessment for older adults who have experienced significant late-life stressors (e.g., bereavement, caregiving, and chronic illness). Another body of his research is focused on treatment and clinical assessment issues with military veterans and other violence-exposed populations. This effort is also timely, given the rapid growth in this demographic group. His work is influenced by positive psychology and focuses on the importance of finding meaning and making sense of stressful life events and he was awarded the Kathryn Grupe Award for Alzheimer's research. For all these reasons and more, the Western Psychological Association is pleased to recognize Dr. Jason Holland with the 2015 WPA Early Career Research Award.



### **Heidi Riggio** Recognized for Service to WPA

Dr. Heidi R. Riggio is a Professor of Psychology at CSU Los Angeles. She has been teaching in the Los Angeles area at various colleges and universities since 1996, earning her Ph.D. in Social Psychology from Claremont Graduate University in 2001.

Dr. Riggio has published research on adult sibling relationships, parental marital conflict and divorce and consequences for adult offspring romantic relationships, cognitive biases, relationship attitudes and their strength, group identity and resistance to persuasion, and religiosity, biased processing, and social dominance. Dr. Riggio teaches social psychology, psychological science, sex and gender, and critical thinking. Dr. Riggio has worked with many graduate students who have gone on to Ph.D. programs to become professors and scholars themselves.

Dr. Riggio has been coming to WPA every year since grad school and for many years she has been instrumental in the success of WPA conventions. Each year she organizes the Last Lecture session that brings together diverse faculty to challenge the audience to become better teachers and scholars. She served as coordinator of the Terman Teaching Conference in 2014. In addition, Dr. Riggio was co-Program Chair for the 2011 WPA convention in Los Angeles.

WPA is indebted to Dr. Riggio for the many contributions that she has made. We are pleased to honor Dr. Heidi R. Riggio with the 2015 Outstanding Service Award.





## Peter Bentler

### Recognized with WPA Lifetime Achievement Award

Peter M. Bentler is widely recognized as the preeminent quantitative psychologist, both nationally and internationally. Dr. Bentler was an undergraduate at Santa Monica College and UCLA, where he received his B.A. degree in 1958. He went on to the University of Pittsburgh for a master's degree in social psychology. He received his doctorate from Stanford University where he studied hypnosis, personality psychology, and the assessment of individual differences. He has had a long career at UCLA where he is Distinguished Professor of Psychology and Statistics.

Dr. Bentler is author of over 500 publications, many of which are citation classics. His research illustrates the tremendous breadth of his interests and expertise with articles on sexuality, substance abuse, multivariate statistics, and psychometrics. The majority of publications were collaborations with students and colleagues in his lab at UCLA. He is perhaps best known for his role in the development of Structural Equation Modeling and the EQS software tool. Among his most important contributions to the theory and practice of structural equation modeling are his research and development of both estimation methods and test statistics for non-normal data and fit indices. Dr. Bentler's writing along with EQS made it possible for SEM to become accessible to the community of psychology researchers.

As noted in his entry by Lisa Harlow in the 2015 Encyclopedia of Clinical Psychology, "Bentler's remarkable career is marked by a myriad of honors" from his professional colleagues. He is a fellow of APA, APS, WPA, and AERA. He received with Karl Jöreskog the 2007 APA Distinguished Scientific Award for the Applications of Psychology. He is also recipient of the 1972 Catell Award for Distinguished Multivariate Research and the 2005 Sells Award for Outstanding Career Contributions to Multivariate Experimental Psychology, both from the Society of Multivariate Experimental Psychology.

Dr. Bentler has served as President of the Psychonomic Society, the Society of Multivariate Experimental Psychology, and the APA Division of Evaluation, Measurement and Statistics. He was President of WPA in 2007-2008. His commitment to WPA is evidenced by his many presentations and workshops given over many years. In addition, the annual Multivariate Research Award given to a WPA student researcher is provided by Multivariate Software Inc, the publisher of EQS and EQSIRT.

The Western Psychological Association is proud to honor Dr. Peter M. Bentler with the 2015 WPA Lifetime Achievement Award.







## **2015 Social Responsibility Award To Dacher Keltner**

Dacher Keltner received his BA from UC Santa Barbara in 1984 and his PhD from Stanford University in 1989. After a post-doc at UCSF with Paul Ekman, in 1992 he took his first academic job, at the University of Wisconsin-Madison, and then returned to Berkeley's Psychology Department in 1996, where he is now a full professor, and director of the Berkeley Social Interaction Lab. See more at

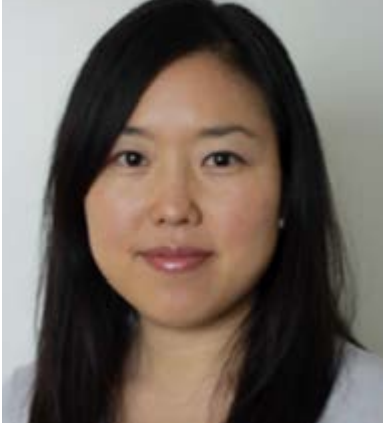
<http://socrates.berkeley.edu/~keltner/>.

Dacher's (rhymes with "cracker") research focuses the biological and evolutionary origins of compassion, awe, love, and beauty, and power, social class, and inequality. Dacher is the co-author of two textbooks, as well as the best-selling *Born to Be Good: The Science of a Meaningful Life*, and *The Compassionate Instinct*. He has published over 160 scientific articles, written for the *New York Times Magazine*, *The London Times*, and *Utne Reader*, and has received numerous national prizes and grants for his research. His research has been covered in *TIME*, *Newsweek*, the *New York Times*, the *BBC*, *CNN*, *NPR*, *The Wall Street Journal*, and in many other outlets, and been a focus in two panels with His Holiness, the Dalai Lama. He has collaborated with directors at Pixar and a design team at Facebook, on projects at Google, and was recently featured in Tom Shadyac's movie *I Am*.

Dacher has received the outstanding teacher and research mentor awards from UC Berkeley, and seen 20 of his PhD students and post-doctoral fellows become professors. *WIRED* magazine recently rated Dacher's podcasts from his course *Emotion* as one of the five best educational downloads, and the *Utne Reader* selected Dacher for one of its 50 2008 visionaries.

Dacher is a founder of the Berkeley Greater Good Science Center (<http://greatergood.berkeley.edu>) and its faculty director, overseeing the Center's fellowship program and serving as executive editor of *Greater Good* magazine. He has taught executive education at Stanford and Berkeley for over 15 years. He is also a WPA Fellow. Dacher lives in Berkeley with his wife, Mollie McNeil, an alumna of Berkeley, and their two daughters.





## Enrico E. Jones Clinical Psychology Research Award To Joyce Chu

Dr. Joyce P. Chu is Associate Professor and Co-Director of the Center for Excellence in Diversity at Palo Alto University. She received her doctorate in 2005 from the University of Michigan. Dr. Chu has published extensively in top journals in her field. Her co-edited special issue (with Michi Fu) “Innovations in Addressing Mental Health Care Disparities” was published in the APA Journal Psychological Services. This issue examines mental health disparities for ethnic minorities and innovative strategies for delivering culturally competent services. It is being hailed as one of the major contributions to the field of ethnicity and mental health since the 2001 U.S. Surgeon General’s Report on culture, ethnicity, and race.

Most importantly, she has emerged as a leader in cultural competency cultural research. Despite important differences in suicide presentation and risk among ethnic and sexual minority groups, cultural competency in the prediction of suicide has typically been left out of systematic risk assessment practices. Dr. Chu developed the Cultural Assessment of Risk for Suicide (CARS) tool to guide the researcher or clinician in the task of incorporating cultural differences in risk assessment efforts for ethnic and sexual minority individuals.

Dr. Chu is Director of the Diversity and Community Mental Health (DCMH) emphasis program, an award-winning doctoral-emphasis training program that prepares clinical psychologists to lead a transformation in the service of diverse underserved communities in the public mental health sector. She is co-principal investigator of a \$421,000 grant from the California Department of Mental Health to train and incentivize future clinical psychologists to serve diverse individuals in community mental health. Under Dr. Chu’s leadership, the DCMH program has recruited 35 doctoral students over the course of three years, 71% of whom are ethnic minorities poised to serve the diverse communities they represent.

Dr. Chu was an APA Minority Fellow, Principal Investigator on a diversity-related Resource Centers for Minority Aging Research (RCMAR) National Institute on Aging grant, and recipient of an NIH Health Disparities LRP grant. She was awarded the prestigious 2012 Samuel M. Turner Award from APA Division 12 (Society of Clinical Psychology) for Distinguished Contributions to Diversity in Clinical Psychology and the 2013 Early Career Award for Distinguished Research from the Asian American Psychological Association. The Western Psychological Association is pleased to recognize Dr. Joyce P. Chu with the 2015 WPA Enrico E Jones Award for Research in Psychotherapy and Clinical Psychology.



# 2015 WPA Convention Featured Outstanding Program in Las Vegas

The 2015 WPA Convention was **our first in Las Vegas** and it was a huge success with over 2,500 attendees. The meeting was hosted by the University of Nevada, Las Vegas with Kim Barchard and Brad Donohue serving as Program Co-Chairs. With WPA President Jodie Ullman, the co-chairs planned an outstanding program. The convention included over 1,000 submitted posters, papers, and symposia that were reviewed by the WPA Program Review Committee.

The **WPA Distinguished Speaker program** featured more than 30 presentations by outstanding psychologists who were invited by the program chairs and by affiliated groups such as Psi Chi, Psi Beta, the American Psychological Association, Society for the Teaching of Psychology, and Psychology Teachers at Community Colleges. Conversation hours with a number of these speakers were organized by Ryan Stoll, the WPA Graduate Student Representative. A synopsis of each of these invited presentations can be found in the 2015 online convention program. The program may be downloaded or searched online at the WPA website: <http://westernpsych.org/convention/>

You can also check out the 2015 program with the **WPA convention app that was introduced** this year. Download it to your computer or smart phone at <http://www.eventmobi.com/wpa2015>

Take a look at our **gallery of photos** from Las Vegas at <http://westernpsych.org/gallery/>

Thanks to WPA member Shari Young Kuchenbecker for volunteering to serve as our photographer.

**Jodie B. Ullman** (CSU San Bernardino) delivered her presidential address, **TEACHING EVALUATIONS: BIASED, IDIOSYNCRATIC, MISUSED**. This was followed by the president's reception sponsored by Therapy Notes.

**Eugene H. Wong** (CSU San Bernardino) gave the WPA Teaching Award address: **BUILDING EFFECTIVE CLASSROOMS: INTEGRATING STUDENT PERCEPTIONS AND WHAT PROFS BRING TO THE CLASSROOM**.

The **WPA Early Career Research Award** address was given by Jason T. Siegel (Claremont Graduate University): **INCREASING HELP SEEKING AMONG PEOPLE WITH ELEVATED LEVELS OF DEPRESSIVE SYMPTOMATOLOGY: ONE GOAL, MULTIPLE APPROACHES**.

Allen M. Omoto (Claremont Graduate University) gave the **WPA Social Responsibility Award** address: **PSYCHOLOGY AND SOCIAL POLICY: ONE PATH TO MAKING A DIFFERENCE**.

The **E.E. Jones Clinical Research Award** address was given by Michael P. Twohig (Utah State University): **ACCEPTANCE AND COMMITMENT THERAPY FOR OBSESSIVE COMPULSIVE AND RELATED DISORDERS**.

The **WPA Life Achievement Award** address was delivered by Peter M. Bentler (UCLA): **NEW METHODS FOR TEST RELIABILITY BASED ON STRUCTURAL EQUATION MODELING**

The **APA Distinguished Scientist Lecture** was given by Roberta Michnick Golinkoff (University of Delaware), **LANGUAGE FOR READING: LESSONS FROM THE CRIB**.

The **Psi Chi program**, organized by Jon Grahe (Pacific Lutheran University), featured a presentation by David C. Funder (UC Riverside), **TAKING SITUATIONS SERIOUSLY**. Psi Chi also sponsored the Psi Chi Poster Session, sessions on graduate school, careers, leadership, and the Psi Chi Chapter Exchange and Awards Program.

**Philip Zimbardo** concluded the distinguished speakers program on Saturday afternoon with a presentation on **THE SECRET POWER OF TIME TO INFLUENCE YOUR DESTINY** that was followed by a book signing.

A **special event was the screening** of the positive psychology film **NORTH OF NORMAL** with the filmmakers Angela Mouton and Monica Montijo, students at Claremont Graduate University.

**Other presentations by distinguished speakers included:**

- Brad Donohue (UNLV) **FAMILY BEHAVIOR THERAPY**
- Cynthia Cupit Swenson (Medical University of South Carolina) **MST-CAN: DISSEMINATING A RESEARCH-SUPPORTED MODEL FOR FAMILIES EXPERIENCING CHILD MALTREATMENT AND SERIOUS CLINICAL NEEDS**
- Daniel N. Allen (UNLV) **SOCIAL COGNITION IN PSYCHOLOGICAL ASSESSMENT**
- Diane F. Halpern (Minerva Schools at KGI) **THE FUTURE OF HIGHER EDUCATION: PLAYING SOON AT A CLASSROOM NEAR YOU**
- Douglas Kenrick (Arizona State University)



- THE RATIONAL ANIMAL: EVOLUTIONARY PSYCHOLOGY MEETS BEHAVIORAL ECONOMICS
- Felicia Friendly Thomas (Cal Poly Pomona) RACIAL TRUST AND MENTORING
  - Brian Nosek (University of Virginia): SCIENTIFIC UTOPIA: CROWDSOURCING SCIENCE
  - Geoff Cumming (La Trobe University, Australia) THE NEW STATISTICS AND OPEN SCIENCE: ESTIMATION FOR BETTER RESEARCH
  - Jamil Zaki (Stanford University) EMPATHY: COMPONENTS, CAUSES, AND CONSEQUENCES
  - Jason F. Reimer (CSU San Bernardino) UTILIZING TARGETED COGNITIVE TRAINING TO ENHANCE LOW WORKING MEMORY CAPACITY IN COLLEGE STUDENTS
  - John R. Lutzker (Georgia State University) BRINGING SAFECARE®, AN EVIDENCE-BASED INTERNATIONAL CHILD MALTREATMENT PREVENTION PROGRAM, TO WIDE-SCALE IMPLEMENTATION
  - Leslie Leve (University of Oregon) RISK FACTORS, OUTCOMES, AND EFFECTIVE INTERVENTIONS FOR GIRLS IN THE JUVENILE JUSTICE SYSTEM
  - Lisa M. Diamond (University of Utah) THE NEW THINKING ON SEXUAL ORIENTATION AND ITS EXPRESSION OVER THE LIFE COURSE
  - Lynne Cripe (The KonTerra Group) ARE YOU A RUBBER BAND OR SQUEEZED LEMON? MAINTAINING RESILIENCE WHEN CARING FOR OTHERS
  - Mark R. Dixon (Southern Illinois University) GETTING CONTROL OF AMERICA'S GAMBLING ADDICTION
  - Maureen C. Kenny (Florida International University) NORMATIVE SEXUALITY DEVELOPMENT IN CHILDHOOD: IMPLICATIONS FOR DEVELOPMENTAL GUIDANCE & PREVENTION OF CHILDHOOD SEXUAL ABUSE
  - Michael A. Webster (University of Nevada, Reno) ADAPTATION AND THE PHENOMENOLOGY OF PERCEPTION
  - Natasha Slesnick (The Ohio State University) INTERVENTION DEVELOPMENT AND EVALUATION WITH SUBSTANCE USING HOMELESS YOUTH: PROMISING BUT UNFINISHED

- P. Wesley Schultz (CSU San Marcos) A SOCIAL PSYCHOLOGICAL APPROACH TO CONSERVATION
- Patricia Chamberlain & Lisa Saldana (Oregon Social Learning Center) BRINGING EVIDENCE-BASED INTERVENTIONS TO SCALE: EXAMPLES FROM THE U.S. AND ENGLAND
- Anthony J. Urquiza (UC Davis) PARENT-CHILD INTERACTION THERAPY: TREATMENT OUTCOMES AND IMPLEMENTATION TO COMMUNITY MENTAL HEALTH SETTINGS
- Ashli J. Sheidow (Oregon Social Learning Center) TREATING YOUTH AND EMERGING ADULTS WHO HAVE COMPLEX PRESENTING PROBLEMS
- Beth Karlin (UC Irvine) THE PSYCHOLOGY OF SUSTAINABILITY

The **Society for the Teaching of Psychology (STP)** program was organized by Heidi Riggio (CSU Los Angeles) It included the STP Last Lecture featuring presentations by Howard Friedman (UC Riverside), Terry Cronan (San Diego State University), and Robert Levine (CSU Fresno).

**The WPA Statistics Workshop program, coordinated by Chris Aberson, featured:**

NOT YOUR GRANDMA'S TIME-SERIES ANALYSIS  
Barbara Tabachnick, CSU Northridge

THE NEW STATISTICS AND OPEN SCIENCE IN PRACTICE: ESTIMATION, META-ANALYSIS, AND RESEARCH INTEGRITY  
Geoff Cumming, La Trobe University Australia

EXPANDING YOUR GROUP-BASED HYPOTHESES: MULTI-GROUP REGRESSION AND LATENT VARIABLE MODELS  
Andrew T. Ainsworth, CSU Northridge

BEST PRACTICES FOR RUNNING AND PRESENTING SEM  
Kathleen Suzanne Johnson Preston, CSU Fullerton



## 2015 WPA Student Research Award Winners



**T**hanks to generous donations by WPA members and endowments administered by the Western Psychological Foundation, 22 students received awards at the WPA Awards Ceremony on Friday, May 1, 2015.

The following students received WPA Student Scholarships. All were **first authors on a WPA presentation** that received outstanding reviews by Program Committee reviewers: Tara N Augustin (University of Nebraska-Omaha), Lilian Cabrera (California State University, Sacramento), Karyn L Delichte (California School of Professional Psychology - Alliant International University), Lindsey C Eskow (University of California, Irvine), Sheina Nilsen (California State University San Marcos), Claire E. Ramaley (Pacific University Oregon), Julia C.Y. Tang (Mount Saint Mary's University), Michelle Tinney (California State University, Sacramento), Brittany Gabrielle Wren (California State University San Marcos).



**The Robert L Solso Research Awards** were presented to Kimberly Osborne (California State University, Long Beach), Ekarin E. Pongpipat (San Diego State University), Aiyana Wain Hirschberg (University of Puget Sound).



**The Christina Maslach-Philip Zimbardo Social Psychology Research Awards** were presented to Katie J. Carlson (Point Loma Nazarene University) and Brian Riches (Claremont Graduate University).



**The Gottfried WPA Student Research Award in Developmental Psychology** was presented to Pauline Goger (California State University, Long Beach).

The recipient of the **Dr. Steven Ungerleider WPA Graduate Research Award** was Daniel J. Slyngstad (Claremont Graduate University).

**The Multivariate Software Award provided by Multivariate Software, Inc** that includes a license for EQS was given to Rosalyn G. Sandoval (California State University, Sacramento).



## These organizations were exhibitors at the 2015 convention:

American School of Professional Psychology Argosy University, San Francisco Bay Area

Arizona School of Professional Psychology at Argosy University

California School of Professional Psychology at Alliant International University

Claremont Graduate University, School of Social Science, Policy & Evaluation

Loma Linda University

National Register of Health Service Psychologists

Northwest University, College of Social and Behavioral Sciences

Palo Alto University

Phillips Graduate Institute

Psi Chi, The International Honor Society in Psychology

Sinauer Associates, Publishers

The Psych Store

The Trust

University of La Verne

University of Nevada, Las Vegas

W.W. Norton & Company

Western Positive Psychology Association  
Worth Publishers

Young Living Essential Oils with  
The Roe Team

Support was provided for the convention program booklet by Multivariate Software, Inc (EQS and EQSIRT), American Psychological Association, McGraw-Hill, Psi Chi - The International Honor Society in Psychology, Therapy Notes, and Discovering Psychology (laurafreberg.com).

Worth Publishers sponsored the Terman Teaching Conference breakfast.

Therapy Notes sponsored the Presidential Reception and Social Hour. Palo Alto University sponsored the Club WPA social.

*WPA thanks these organizations for their support.*

## 2015 WPA Film Festival Winners



**T**he WPA Film Festival this year was under the direction of Carrie M Margolin; the projectionists were Eva Mearns, Andrea Mendoza, Sapphire Morton, and Taylor Van Rysselberghe, all from The Evergreen State College. As at previous conventions, we asked each person viewing a film to rate its overall quality, using a 5-point scale ranging from 1 (Very Poor) through 5 (Very Good). A majority (83%) of the films received Good (4) to Very Good (5) average ratings and the overall mean rating was 4.42. In this year's very close race, the top two films received mean ratings of 4.83 and 5.00; these were designated as our Film Festival Winners for their exceptional quality.

**If you missed these two outstanding films at the Film Festival, you will have another chance to see them during a special encore presentation at the 2016 WPA Convention:**

**Forget Me Not - Losing Memory - Finding Love**  
(88 mins)

Filmmaker David Sieveking weaves an astonishingly candid, loving and revelatory chronicle of the changes his mother's Alzheimer's has on his family. Although dealing with his mother's disease is painful, caring for her does offer Sieveking a chance to reconnect with his family and immerse himself in the secrets and passions of his parents' long and fascinating lives. What emerges is a poignant and rich study of family ties and the unexpected rewards that come from living life to the fullest.

Bullfrog Films (2012; DVD).

Rental Price \$95; Purchase Price \$295

**Homecoming: Conversations with Combat PTSD**

(29 mins)

Homecoming is a documentary film exploring how United States Marines experience Post Traumatic Stress Disorder. Using interviews with Marine combat veterans of OIF and OEF, the film takes viewers beyond the abstract concept of "PTSD" to reveal what it means to live with the memories of war after coming home.

It invites the viewer to rethink the idea of Combat Post Traumatic Stress Disorder and their own responsibility to our men and women in the armed services.

Trespass Productions (2013; DVD, Blu-Ray).

Rental Price n/a;

Purchase Price \$200/universities & colleges

The complete list of 2015 films including ratings of each film is available online at <http://westernpsych.org/wp-content/uploads/2015/07/Film-Festival-WPA-2015.pdf>



# Terman Teaching Conference



**The Terman Teaching Conference** was held on Wednesday, April 29. Anne Duran (CSU Bakersfield) coordinated the conference. Highlights included:

- Active Collaboration during Tests Improves Student Learning, Deepti Karkhanis and Tabitha Turowski (Bellevue College)
- Belly Flop or Pencil Dive? How to Create a Successful Flipped Course, Bethany Fleck (Metropolitan State University of Denver), Heather D. Hussey (Northcentral University), Lisa Beckman (University of Nevada, Las Vegas)
- Teaching Take-outs, Bethany Fleck (Metropolitan State University of Denver)
- Online Discussion Boards for Meaningful Interaction (Instead of Superficial Busywork), Naomi Jeffery Peters (Central Washington University)
- What's Normal, Anyway? Autism and the BAP in the Classroom: Teaching to Today's Changing Landscape of College Students, Diane Simpson Brown (Everett Community College)
- Psychology is about People, Finally, Daniel Cervone (University of Illinois at Chicago) Netasha

## 2016 TERMAN TEACHING CONFERENCE

The Western Psychological Association has long offered the Terman Teaching Conference on the day preceding its annual convention. The 96th annual convention will be no exception and the Terman Teaching Conference will be held at the convention hotel—The Westin Long Beach—on Wednesday, April 27th, 2016 from approximately 9 a.m. to 5 p.m. Past Terman Conferences have been extremely successful under the longtime stewardship of Anne Duran, CSU Bakersfield.

This year's teaching conference will be facilitated by J. Kris Leppien-Christensen, Saddleback College (Chair) and Diane Simpson Brown, Everett College (Associate Chair) with a theme of assessment comprising the afternoon session. The focus on these presentations will revolve around assessing the APA Guidelines for the Undergraduate Psychology Major (Version 2.0) as well as assessments related to regional accreditation standards. Assessment of online education will be included in these sessions as well.

The morning session is designed to have broad appeal and will have a number of presentations directly relevant to the teaching of psychology regardless of the level of instruction. Speakers are being sought in a variety of areas including technology use and perceptions within the classroom. As speakers are confirmed, more information will be released with the goal of having the Terman Teaching Conference programming available at the same time as the annual convention program.

Please consider attending the Terman Teaching Conference as it is one of the most affordable conferences at \$25 if you preregister or \$30 the day of the conference. All of the presentations are intended to have direct classroom applications, so they should be of great interest to all of us who teach.



### 2016 Multivariate Software Award: Call for Nominations

Peter Bentler and Eric Wu, creators of EQS structural equation modeling software and EQSIRT Item Response Theory software published by Multivariate Software, will award a license for EQS along with a cash prize to a student who presents outstanding multivariate research at the WPA convention. Structural equation methodology has become a very important multivariate technique for the analysis of causal hypotheses with non- or quasi-experimental data. Students wishing to be considered for this award should send a research summary (1,200 word maximum) by January 2, to WPA at [cozby.wpa@gmail.com](mailto:cozby.wpa@gmail.com). Please use the subject line: 2016 Multivariate Software Award.

**DEADLINE**  
for Nominations  
**JAN. 2!**

 Submit

### Nominations Sought For WPA Awards

The WPA Fellows and Awards Committee is requesting nominations from members for awards in 2016 and beyond. The awards include the Outstanding Teaching Award, the Early Career Research Award (10 years post- Ph.D. or less), and the E. E. Jones Award in Psychotherapy and Clinical Research. Members of WPA who have made outstanding and sustained contributions to psychology through research, teaching, or service to the profession are eligible to become WPA Fellows.

Please click the About WPA tab for links to nomination procedures and information on each of these awards and previous award winners. The deadline for receipt of all nominating materials is January 2. Nomination materials should be sent by email with attachments to Dr. Dale Berger, Chair, WPA Awards Committee, at [Dale.Berger@cgu.edu](mailto:Dale.Berger@cgu.edu). Please identify all correspondence concerning a WPA award nomination with a Subject: line that begins with WPA Award ...”

 Submit





### New WPA Fellow Announced

The [Fellows and Awards Committee](#) named Kristopher Leppien-Christensen from Saddleback College as a new Fellow of the Association at the 2015 convention.

### WPA Links

[Membership and Convention Registration Information](#)

[Call for Papers: Submission Information for the 2015 Convention](#)

(Posters, Papers, Symposia)

[Advice on Submitting an Abstract for the Convention](#)



**DEADLINE**  
for Submissions  
**NOV. 16!**

### Renew or Join WPA Now

Join WPA for 2015-2016 now. It is easiest to join online at our website using your credit card. You may also mail your payment. WPA dues are very reasonable. Professional memberships are \$55 for one-year, \$100 for two-year, and \$135 for a three-year membership. Consider a lifetime membership for \$750.

Student affiliate membership is included with registration for the convention.

Membership information is online at [westernpsych.org/membership](http://westernpsych.org/membership)

Membership

Plan ahead by reading all submission information on the WPA website [westernpsych.org](http://westernpsych.org).

