



NEWSLETTER OF THE WESTERN PSYCHOLOGICAL ASSOCIATION

# WESTERN PSYCHOLOGIST

CONVENTION  
ISSUE!

FEBRUARY 2018 | VOLUME 34 | NO. 1 | WESTERNPSYCH.ORG

# IN THIS ISSUE

WPA 2018 Convention Information . . . . .	.4
WPA Convention Invited Speakers . . . . .	.6
THURSDAY. . . . .	.6
FRIDAY. . . . .	.7
SATURDAY. . . . .	.9
SUNDAY . . . . .	12
Terman Teaching Conference . . . . .	13
Thank You, Sponsors . . . . .	14
Enjoying Your Visit to Portland. . . . .	15
WPA News Updates . . . . .	16
Meet WPA's New Staff . . . . .	17



**Join Us**

**NINETY - EIGHTH  
ANNUAL CONVENTION**

**April 26-29, 2018**

Portland Marriott Downtown Waterfront Hotel

**POSTER, PAPER, SYMPOSIUM SESSIONS**

*Statistics Workshops, Special Programs  
for Students & Teachers plus  
the WPA Film Festival*

**The Terman Teaching Conference  
April 25, 2018**

Our **distinguished speakers** will include Sarah Bowen, Troy Campbell, Thomas J. Doherty, Jennifer Freyd, Howard Friedman, Phillip Holcomb, Robert M. Kaplan, Shari Young Kuchenbecker, Eric Landrum, Steve Lindsay, Elizabeth Loftus, Ksenija Marinekovic, Christina Maslach, Brian McNeill, Allen Omoto, William Todd Schultz, and Philip Zimbardo, with more to be announced on the WPA website.



**CONVENTION HOST**

**P  
O  
R  
T  
L  
A  
N  
D**

# WPA 2018 Convention Information

## REGISTRATION for the 2018 CONVENTION

It is time to complete your convention registration. Links for registration are on the WPA website ([westernpsych.org](http://westernpsych.org)). We encourage you to pre-register to reduce waiting time at the registration counters, and to receive early registration rates! Early registration closes March 31.

If you have registered, but still have an open invoice, please go to the website to log in and pay by credit card, or mail a check (due at WPA office by April 20). The convention dates are April 26 -29, with the Terman Teaching Conference on April 25.

REGISTER NOW



## HOTEL and TRAVEL INFORMATION

All WPA events will be held at the **Portland Marriott Downtown Waterfront Hotel**, at 1401 SW Naito Parkway. The Marriott has sold out, but you may check for cancellations, using the link and/or phone number below.

Reserve online: <https://aws.passkey.com/go/wpa2018>

Phone: 1-877-901-6632 (refer to the Western Psychological Association Conference). Special rates end March 26, 2018, or until rooms sell out, whichever comes first.

Additional Hotels:

### **The Porter Portland, Curio Collection by Hilton**

1355 SW 2nd Ave. Located just one block away from the **Portland Marriott Downtown Waterfront Hotel**, this brand-new hotel will accept reservations for the WPA Convention before its official opening. For reservations, contact Lauren Binney by email at [lbinnay@theporterhotel.com](mailto:lbinnay@theporterhotel.com), or by phone at 626-644-0559. Special rates for WPA Convention attendees: Single room \$174, double \$174, triple \$184, quad \$194 (all rooms plus taxes and fees). Reserve now, before your preferred room type sells out! WiFi is included in the room rate.



The WPA website also has detailed information on travel from the airport (taxi, the Downtown Express shuttle, and the Portland light rail). The website includes links to information on downtown sightseeing and things to do in Portland. Visit this page for more: <http://westernpsych.org/wpa-convention-hotel-travel-information/>

## CONVENTION OVERVIEW

Congratulations and thanks to program Chair Alyson Burns-Glover and co-Chairs Dawn Salgado and Heide Island of Pacific University Oregon, along with WPA President Terry Cronan, for inviting an outstanding group of distinguished psychologists, who will present talks on a variety of topics. The WPA student council, headed by graduate student representative Allison Mack, is also contributing to student participation opportunities. There will also be symposia, paper and poster sessions, the WPA Film Festival, Statistics Workshops, and special workshops and panels for students and teachers.

The complete program will be on the website by mid-March.





## CONTINUING EDUCATION CREDITS

We will have APA-approved Continuing Education Credit available for the WPA convention and the Terman Teaching Conference. Information and registration forms will be available by Mid-March on the WPA website. If you wish to obtain CE credit for eligible sessions, you must sign in/out and complete an evaluation form after the session. You must also register by May 14, using our online registration system. There is a \$55 fee for a certificate for the WPA convention; the same fee applies to the Terman Teaching Conference, but if someone is attending both the WPA convention AND the Terman Teaching Conference, they only need to purchase one \$55 CE Credit - not two.

Updates will be posted here: <http://westernpsych.org/wpa-convention-ce-credits/>

## STATISTICS WORKSHOP SCHEDULE

See Convention Highlights section below for presenter names and workshop descriptions.

- Thursday - Statistics Workshop 1: Kathleen S. J. Preston - IRT for the People - An Introduction to Item Response Theory
- Friday - Statistics Workshop 2: Jonathan Helm - Using Structural Equation Modeling to fit Analyses of Variance
- Saturday - Statistics Workshop 3: Joel S. Steele - Introduction to Bayesian Modeling
- Sunday - Statistics Workshop 4: Christopher L. Aberson - Statistical Power Analysis for Regression-Based Designs

## FILM FESTIVAL

This year's film festival will take place all day Thursday, Friday, and Saturday (April 26-28) in Salon D. Film titles include:

- 12 Days
- A Dangerous Idea: Eugenics, Genetics and the American Dream
- Bones of Contention
- Double Life: A Short History of Sex in the USSR
- Selling Your Soul
- Earth Seasoned...#GapYear
- From This Day Forward
- Memories of a Penitent Heart
- My Love Affair with the Brain - The Life & Science of Dr. Marian Diamond
- Out of State
- Rebels on Pointe
- Sacred Water
- Stumped
- The Return
- The S-Word
- Tokyo Idols
- Vamik's Room
- Who Am I to Stop It (short) Part 1: Dani's Story
- Who Am I to Stop It (short) Part 2: Kris's Story
- Who Am I to Stop It (short) Part 3: Brandon's Story



**Find us on Facebook or follow on Twitter at @WPAwesternpsych to connect with others attending the convention, using #WPA2018.**



# WPA Convention Invited Speakers

In addition to talks by featured speakers, there will be poster and paper sessions, symposia, and workshops throughout each day, Thursday through Sunday. See below for topics and biographies of invited speakers.

## THURSDAY

**Statistical Workshop 1:** Kathleen S. J. Preston - IRT for the People - An Introduction to Item Response Theory.

**Sarah Bowen**, associate professor in the PhD clinical psychology program at Pacific University Oregon, will present on MINDFULNESS-BASED INTERVENTIONS FOR ADDICTIVE BEHAVIORS: INTEGRATING ANCIENT AND CONTEMPORARY APPROACHES TO BETTER UNDERSTAND AND SUPPORT BEHAVIOR CHANGE.

**D. Stephen Lindsay**, Ph.D. is a professor of psychology at the University of Victoria, as well as editor-in-chief of Psychological Science. He will address REPLICABILITY IN PSYCHOLOGICAL SCIENCE.

**Phillip Holcomb**, Ph.D., spent 25 years on the faculty of Tufts University before joining the faculty at San Diego State University in 2013. He will present on THE NEUROCOGNITION OF LANGUAGE PROCESSING.

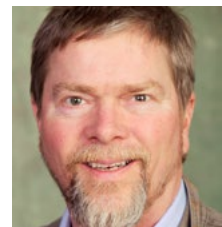
**Gayle Kirschenbaum** is an Emmy award-winning filmmaker and TEDx speaker. She will speak on the topic NO MORE DRAMA WITH MAMA: HOW TO ACCEPT, FORGIVE AND EVEN LOVE A CRITICAL PARENT.

**Shari Young Kuchenbecker**, Ph.D. has taught at many universities and is a cofounder of the Western Positive Psychology Association (WPPA) at Claremont Graduate University. She will speak on her most recent work POSITIVE PSYCHOLOGY: FACES TELL OUR STORIES: FROM POSITIVE REINFORCEMENT, THROUGH EMPATHY, TO OXYTOCIN & POSITIVE COMMUNITY. Shari has served as the WPA Convention event photographer since 2014.

**Brian McNeill**, Ph.D. is a professor and co-director of training for the Counseling Psychology program at Washington State University. He has co-authored and co-edited several texts, and will draw from one of those while discussing MESTIZA/O, INDIGENOUS, AND LIBERATION PERSPECTIVES ON SOCIAL ISSUES.



Sarah Bowen



D. Stephen Lindsay



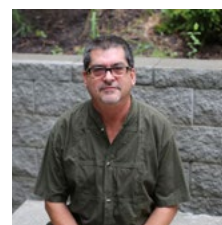
Phillip Holcomb



Gayle Kirschenbaum



Shari Young Kuchenbecker



Brian McNeill





R. Eric Landrum

**R. Eric Landrum**, Ph.D. is a professor of psychology at Boise State University. His research interests center on the educational conditions that best facilitate student success, as well as on the use of SoTL strategies to advance the efforts of scientist-educators. His focus on education can be seen in his talk ‘COVERAGE IN INTRODUCTORY PSYCHOLOGY, AND OTHER LIES WE TELL OURSELVES ON Thursday, April 26. He has over 400 professional presentations at conferences, published over 25 books/book chapters and 75 professional articles. He has worked with over 300 undergraduate research assistants and taught over 13,000 students in 24 years at Boise State University.



Thomas Doherty

**Thomas Doherty**, Psy.D. is a licensed clinical psychologist, former faculty member at Lewis & Clark Graduate School, and founding editor of the peer-reviewed interdisciplinary academic journal Ecopsychology. He will speak on CLIMATE, NATURE & MENTAL HEALTH: KEY CONCEPTS & DIALOGUES.



Heidi Rose Riggio

**Dr. Heidi Rose Riggio**, assistant professor of psychology at CalState LA, will chair THE LAST LECTURE. Each year, the Society for the Teaching of Psychology invites distinguished teachers to give their “last lecture” – a deliberately ambiguous assignment that involves a reflective look at teaching. The Last Lecture always elicits responses that are as fascinating as the lecture. Featuring **Dr. Jodie Ullman** of California State University San Bernardino, **Dr. Kris Leppien-Christensen** of Saddleback College, and **Dr. Bernard Weiner** of University of California Los Angeles.



Jodie Ullman



Kris Leppien-Christensen

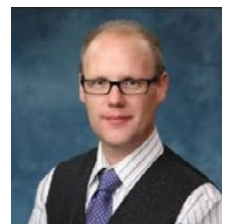


Bernard Weiner

## FRIDAY

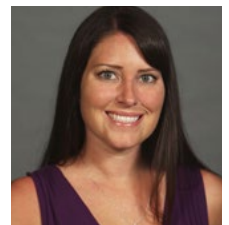
**Statistics Workshop 2:** Jonathan Helm - Using Structural Equation Modeling to fit Analyses of Variance.

**Dr. Garth Fowler** is responsible for the development of American Psychological Association resources that assist and enhance the education and training of graduate students and postdoctoral scholars in psychology. He will lead the FUNDING AND FINANCING YOUR RESEARCH Workshop.



Dr. Garth Fowler

**Kathleen Preston**, Ph.D. – STATISTICS WORKSHOP: IRT FOR THE PEOPLE – AN INTRODUCTION TO ITEM RESPONSE THEORY. The focus of this workshop will be on applications of Item Response Theory (IRT) models to measuring psychological phenomena. Kathleen Preston is an Associate Professor in the Department of Psychology at California State University, Fullerton, where she teaches several statistics courses, including introductory, advanced, and multivariate statistics, as well as psychometrics and structural equation modeling.



Kathleen Preston





Jonathan Helm

**Jonathan Helm, Ph.D.** – STATISTICS WORKSHOP: USING STRUCTURAL EQUATION MODELING TO FIT ANALYSES OF VARIANCE. This workshop will present the output from different ANOVAs (one-way between subjects, two-way between subjects, repeated measures), and directly reproduce the results in SEM (e.g., main effects and interactions). The workshop aims to help students understand the underlying principles of SEM, and be empowered to apply the method. Dr. Helm is an Assistant Professor of Quantitative Psychology at San Diego State University. His research focuses on the development and dissemination of new methods for longitudinal data analysis. His strongest research interest surrounds methods for analyzing intensive longitudinal data.



Ksenija Marinkovic

**Ksenija Marinkovic, Ph.D.** is an associate professor of psychology at San Diego State University and adjunct associate professor of radiology at the University of California at San Diego. She specializes in multimodal brain imaging methods to investigate distributed neural circuits underlying cognitive and emotional functions, as in BRAINS N' BOOZE: ACUTE COGNITIVE NEURODYNAMICS AND NEUROADAPTATION TO HEAVY USE.



Theodore Burnes

**Theodore Burnes, Ph.D.** is the Director of Training and Educational Programs for the Los Angeles Gender Center, a full professor of psychology at Antioch University, Los Angeles, and a consultant. Burnes will discuss “WE ARE THE ONES WE’VE BEEN WAITING FOR”: CRITICAL CONSCIOUSNESS AS CHANGE AGENT IN THE FUTURE OF PSYCHOLOGY.



Christina Maslach

**Christina Maslach, Ph.D.** is a professor of psychology (emerita) at the University of California at Berkeley. She is best known as the pioneering researcher on job burnout, and will discuss her work and career in MAKING A SIGNIFICANT DIFFERENCE.

**Elizabeth Loftus, Ph.D.** is a distinguished professor at the University of California, Irvine, holding faculty positions in two departments: Psychology & Social Behavior; and Criminology, Law & Society. She has published 22 books and over 500 scientific articles, and has held various leadership positions and received numerous awards and recognitions. EAVESDROPPING ON MEMORY will address her ongoing research on the malleability of human memory.



Elizabeth Loftus

**Terry Cronan, Ph.D.** is a professor at San Diego State University, with research interests in community interventions, community psychology, multicultural issues, coping and chronic diseases, and health care utilization. She is also the current President of the Western Psychological Association. Her presidential address is entitled WHAT DOES IT MEAN TO MENTOR? GENDER AND GENERATIONAL EFFECTS.

**Dr. Stephen Chew** is professor and chair of psychology at Samford University in Birmingham, Alabama. Chew was selected as a Carnegie Scholar in 1998 as part of the Carnegie Academy for the Scholarship of Teaching and Learning (CASTL). He will present on LOST IN TRANSLATION: WHY DOES SO MUCH LEARNING RESEARCH HAVE SO LITTLE IMPACT ON PEDAGOGICAL PRACTICE?



Terry Cronan



Stephen Chew





**Paul Quinnett**, Ph.D. serves as a clinical assistant professor in the Department of Psychiatry and Behavioral Science at the University of Washington School of Medicine, and is the founder and CEO of QPR Institute. A clinical psychologist and trainer for more than 35 years, Dr. Quinnett developed and managed a suicide prevention hotline, an emergency services department, and a dozen mental health service delivery programs, as well as authored multiple books, chapters, and articles. He shares his experience in *A CAREER WELL SPENT: HOW I BECAME A PSYCHOLOGIST AND WHY I WILL NEVER RETIRE*.



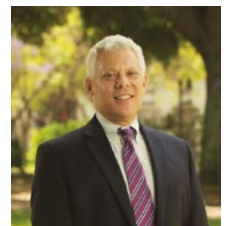
Paul Quinnett

**Troy Campbell**, Ph.D. is a design psychologist and assistant professor of marketing at the University of Oregon. He is a former Disney Imagineer and conducts psychological research on experiences, communications, politics, marketing, and social psychology to advance theory in a manner that provides immediate help for designing actionable steps for better business and a better world. His presentation is titled *BEYOND CHOIR SPEAK: A MODEL FOR MARKETING SOCIAL CHANGE WITH BIASED AND HOSTILE AUDIENCES*.



Troy Campbell

**Allen M. Omoto**, Ph.D. is a professor of psychology and education and an administrator at the Claremont Graduate University, and has previously received WPA's Social Responsibility Award, and an American Psychological Association Presidential Citation. His research focuses on the social and psychological aspects of prosocial behavior, volunteerism, and civic and political engagement, which he will address in *SCIENCE, POLICY, AND SOCIAL JUSTICE: PSYCHOLOGY'S GUIDING TRIUMVIRATE?*



Allen M. Omoto

## Saturday

**Statistics Workshop 3:** Joel S. Steele - Introduction to Bayesian Modeling.



Melinda Blackman

**Melinda Blackman**, Ph.D. of California State University, Fullerton will facilitate *SPEED RESEARCH*. This session allows students to gain insight into various WPA Professional Members' research programs and to ask questions. Eight faculty members and twenty-four students will participate in this 60-minute session.

**Joel Steele** – *STATISTICS WORKSHOP: INTRODUCTION TO BAYESIAN MODELING*. This workshop aims to introduce attendees to the basics of Bayesian modeling using Gibbs sampling. Attendees will learn to develop and specify models, fit these models to data, determine how well each model represents the data, and draw inferences from the resulting estimates. Dr. Steele is an associate professor of psychology at Portland State University. He earned his doctorate in Quantitative Psychology from University of California, Davis in 2011. His work focuses on longitudinal data analysis and spans multiple substantive disciplines. He regularly teaches courses on Univariate and Multivariate statistics, longitudinal data analysis using Structural Equation Modeling and Mixed-Effects Modeling, and Introduction to Statistical Computing with R.



Joel Steele

**Dr. Garth Fowler** has presented over 100 workshops on career and professional development, served as a panelist for two National Academies of Science Committees (the State of the Postdoctoral Experience, and the Committee on Research Universities), and Chaired the AAAS Science and Technology Policy Fellowship Selection Committee (2017). In this session he will share his experience in *FINDING FIT: A STRATEGIC APPROACH TO GRADUATE PSYCHOLOGY APPLICATIONS*.





Kerth O'Brien



Rodolfo Mendoza-Denton



Tiffany N. Brannon

**Kerth O'Brien**, Ph.D., Portland State University (Chair): SPECIAL INVITED PANEL: SCHOLARSHIP ON SOCIAL ISSUES: PERIL AND PROMISE (Panelists are nationally known researchers in diversity and social justice). TOWARDS A SCIENCE AND PRACTICE OF INCLUSION, **Rodolfo Mendoza-Denton** (University of California, Berkeley) ADVANCING SCIENCE AND SOCIETY: ROOTS AND RELEVANCE OF PSYCHOLOGICAL SCIENCE FOR PROMOTING SOCIAL JUSTICE, **Tiffany N. Brannon** (University of California, Los Angeles) SCHOLARSHIP AND ACTIVISM: NEVER THE TWAIN SHALL MEET? **Allen M. Omoto** (Claremont Graduate University)

**Dr. Jill Mellen** and **Dr. Joe Erwin** will be presenting during a Conversation Hour on BEYOND ACADEMIA: NON-TRADITIONAL PROFESSIONAL CAREERS IN COMPARATIVE AND BIOLOGICAL PSYCHOLOGY. Dr. Mellen's areas of expertise include animal welfare and enhancing guest experiences in informal learning settings, such as zoos. Her Ph.D. was one of the first multi-institutional zoo studies and focused on felids. Mellen has worked in the zoo field for over three decades most recently at Disney's Animal Kingdom as Education-Science Director. Joe Erwin, Ph.D. is a Research Professor of Anthropology at Columbian College of Arts and Sciences, where he investigates several aspects of primate neurobiology, especially its place in the comparative study of aging.

**Michael Levin**, Ph.D. is an assistant professor in the Combined Clinical, Counseling, School Psychology Ph.D. program at Utah State University. Dr. Levin's research focuses primarily on taking a theory-driven approach to developing web/mobile-based interventions to help address a range of psychological/behavioral problems. He will address DELIVERING ACCEPTANCE AND COMMITMENT THERAPY ONLINE: RESEARCH FINDINGS AND FUTURE DIRECTIONS.

**Jennifer Freyd**, Ph.D. is professor of psychology at the University of Oregon and a visiting scholar at Stanford University. Freyd also serves as the Editor of The Journal of Trauma & Dissociation. Freyd's current research focuses on betrayal trauma, institutional betrayal, and institutional courage. Freyd has authored or coauthored over 200 articles and several books, and was awarded the Lifetime Achievement Award from the International Society for the Study of Trauma & Dissociation in 2016. Her presentation concerns INSTITUTIONAL BETRAYAL AND INSTITUTIONAL COURAGE IN THE AGE OF #METOO.

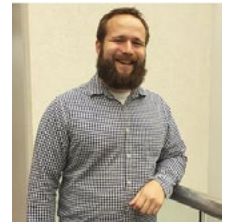
**Vivian McCann** is a senior faculty member in psychology at Portland Community College in Portland, Oregon. She has served on the American Psychological Association's executive committee for Psychology Teachers at Community Colleges (PT@CC) and is an active member of the Western Psychological Association and the Association for Psychological Science. She also co-authors *Psychology: Core Concepts* with Philip Zimbardo and Bob Johnson. Her most recent passion involves working with The Heroic Imagination Project, a non-profit organization dedicated to teaching people of all ages to stand up, speak out, and develop their own inner heroes in pursuit of a more compassionate world. Her presentation is entitled BUILDING BRIDGES TO FACILITATE STUDENT SUCCESS.



Jill Mellen



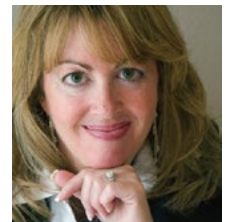
Joe Erwin



Michael Levin



Jennifer Freyd



Vivian McCann





William Todd Schultz

**William Todd Schultz** is a professor of psychology at Pacific University Oregon. He edited the groundbreaking Handbook of Psychobiography, and currently curates/edits the psychobiography series Inner Lives (Oxford University Press). He has written two full-length psychobiographies and one biography, and is currently working on a book focusing on openness and artistic temperament, which you will see reflected in his talk THE MIND OF THE ARTIST.



Elizabeth Campbell

**R. Eric Landrum** is President of Psi Chi, the International Honor Society in Psychology. During Summer 2008, he led an American Psychological Association (APA) working group at the National Conference for Undergraduate Education in Psychology studying the desired results of an undergraduate psychology education. His MORE DISRUPTION IN HIGHER EDUCATION: STUDENTS, SKILLS, AND COMPETENCIES (OH MY!) is on Saturday, April 28.

**Elizabeth Campbell, Ph.D.**, associate professor at Whitworth University, will assist in presenting the PSI CHI CHAPTER EXCHANGE AND AWARDS for the Western region, and moderating the session PSI CHI SESSION: TIPS FOR GETTING INTO AND SURVIVING GRADUATE SCHOOL. The panel of speakers with distinct graduate experiences will provide insight about getting into and succeeding in graduate school. Talks will cover a range of topics, including suggestions for finding the right program, making the best application, faculty tips for success in graduate school, and life as a graduate student. Ample time will be provided for questions from the audience.



Stacey Doan

**Dr. Stacey Doan** is an assistant professor of Psychology at Claremont McKenna College and director of the Applied Mind and Health Laboratory. Dr. Doan also directs the Berger Institute for Work, Family and Children. She has received several awards and published over 30 papers. Her presentation will address THE ADAPTIVE FUNCTIONS OF NEGATIVE EMOTIONS AND BEHAVIORS.



Robert Kaplan

**Robert Kaplan** is Director of Research at the Stanford Medicine Clinical Excellence Research Center. He is a former Associate Director of the National Institutes of Health and a former Chief Science Officer in the US Department of Health and Human Services Agency for Healthcare Research and Quality. Kaplan is a member of the National Academy of Medicine. His presentation is entitled INVESTMENTS IN HEALTH: SPENDING LESS TO ACHIEVE MORE.

**Howard S. Friedman** is Distinguished Professor at the University of California, Riverside. His book, The Longevity Project: Surprising Discoveries for Health and Long Life from the Landmark Eight-Decade Study, summarizes his 25-year scientific study of pathways to health and longevity. He is a past president of the Western Psychological Association, and has received major scientific awards for his health research. He will speak on THE TRUTH AND THE FAKE NEWS ABOUT THRIVING AND LONG LIFE.



Howard S. Friedman

**Christopher Aberson, Ph.D.** – STATISTICS WORKSHOP: STATISTICAL POWER ANALYSIS FOR REGRESSION-BASED DESIGNS. This workshop discusses protocols for addressing statistical power for techniques such as multiple regression, mediation, logistic regression, and moderated regression. The workshop addresses key considerations such as effect size determination and persistent causes of underpowered designs. Dr. Aberson is currently Professor of Psychology at Humboldt State University. He earned his Ph.D. at the Claremont Graduate University in 1999. His research interests in social psychology include prejudice, racism, and attitudes toward affirmative action. His quantitative interests focus on statistical power. He currently serves as Editor-in-Chief for Analyses of Social Issues and Public Policy (ASAP). His book, Applied Power Analysis for the Behavioral Sciences was published in 2010, with a 2nd edition in preparation.



Christopher Aberson



## Sunday

**Statistics Workshop 4:** Christopher L. Aberson - Statistical Power Analysis for Regression-Based Design.

**Philip Zimbardo**, Ph.D. has been a Stanford University professor since 1968 (now an Emeritus Professor), having taught previously at Yale, NYU, and Columbia University. He continues to teach efforts at the Pacific Graduate School of Psychology. He has been given numerous awards and honors as an educator, researcher, writer, and contributor to the profession. He has been president of the American Psychological Association, was awarded the Havel Foundation Prize for his lifetime of research on the human condition, and has been awarded a dozen honorary degrees. Among his more than 500 professional publications and 60 books is the oldest current textbook in psychology, *Psychology and Life*, in its 20th Edition, and *Core Concepts in Psychology* in its 8th Edition. His latest passion is helping to create wise and effective everyday heroes through his Heroic Imagination Project.



Philip Zimbardo

**Zimbardo will share his insights and experience in a special interview,  
INSIDE THE MIND OF DR. ZIMBARDO: THE ACTOR'S STUDIO COMES TO WPA**

---

## ***Renew or Join WPA Now***

MEMBERSHIP





# TERMAN TEACHING CONFERENCE



**T**he Terman Teaching Conference will be at Portland Marriott Downtown Hotel held on April 25, the Wednesday prior to the WPA convention. This is an excellent value with a **registration fee of only \$25 if you register online by March 31.** Last/onsite registration increases to \$50, so reserve your spot today!

This year's theme is **“Helping Students Inside and Outside the Classroom.”**

## Agenda:

- 8:30 AM **Registration**
- 9:00 AM **Welcome and Introductions:** J. Kris Leppien-Christensen, Terman Conference Chair
- 9:15 AM **The Neuroscience of Addiction:** Reducing Stigma Through Understanding and Education, Darryl S. Inaba, Director of Clinical and Behavioral Health Services for the Addictions Recovery Center & Director of Research and Education of CNS Productions
- 10:15 AM **Coffee Break** (in-room)
- 10:30 AM **The Successful College-to-Career Transition for Workforce Psychology Graduates:** It's All About Assignments, R. Eric Landrum, Boise State University & President of Psi Chi, the International Honor Society in Psychology
- 12:00 PM **Lunch Break**
- 2:00 PM **Don't Be Shy About Helping Shy Students:** A Teaching Module Based on the Personal and Professional Journey of a Personality Psychologist. Bernardo J. Carducci, Shyness Research Institute, Indiana University Southeast
- 3:00 PM **Accessible Scientific Reasoning Modules for Large Introductory Psychology Courses:** Raechel N. Soicher, Oregon State University
- 4:00 PM **Afternoon Break**
- 4:15 PM **Technology for Academics:** Essential Technology 2018, Sue Frantz, Highline College
- 5:15 PM **Conference Closing and Evaluation:** Diane S. Brown, Terman Conference Associate Chair

More information: <http://westernpsych.org/terman-teaching-conference/>



# Thank You, Sponsors

WPA thanks Pacific University Oregon, the American Psychological Association, APA Style Central, Alliant University, Palo Alto University, and TherapyNotes for their support of the 2018 Convention.



**Host University**



**Gold Sponsor**



**"Women Who Wonder" Sponsor**



**Silver Sponsor**

**PALO ALTO UNIVERSITY**

Engaging Minds. Improving Lives.

**Student Breakfast Sponsor**



**Terman Teaching Conference Sponsor**



# Enjoying Your Visit to Portland



We hope you will find time to enjoy some of the great things Portland has to offer. Downtown has art museums (Portland Art Museum free on Friday), Powell's books, live theater, live music, food carts, restaurants, shopping. Check out what's happening at the Crystal Ballroom or the Doug Fir Lounge or Dante's or Roseland or the Ash Street Saloon. Find the Stumptown Coffee Roasters or Voodoo Doughnuts. Have a beer at Bailey's Taproom downtown or Henry's Tavern in the Pearl District. There's a Full Sail pub across the street in the Riverplace shopping area. Check out the menu at Mother's Bistro & Bar or right next to our hotel at Veritable Quandary Restaurant, or up the street at Nel Centro. Departure is a rooftop lounge and restaurant. Check out the aerial tram, a short ride away from the hotel by streetcar. Have fun finding things with Google, Yelp, and Trip Advisor.

Also see the handy links below.

- [Portland Activities \(Trip Advisor\)](#) - Includes descriptions of many walking and bike tours, including brewery tours. Also, a Portlandia tour or a Grimm tour (Wesen!!!).
- [10 Things to Do \(Time Online\)](#)
- [Things to Do \(Lonely Planet\)](#)
- [5 Free Things to Do \(Seattle Times\)](#)
- [Live music events calendar](#)





# 2018 WPA Election is Coming Soon!

Professional WPA members will soon receive ballots for the 2018 election. As in previous years, the election will be conducted online – a link will be sent via e-mail that will take you to a secure ballot.

This year, the election will feature candidates running for three open positions, each having a term of three years. The order of candidates' names appearing on the ballot for each position was determined by coin toss.

The positions and candidates are as follows:

- **President-Elect:** The President-Elect serves on the WPA Executive Board as President-Elect (year 1), President (year 2), and Past President (year 3). The President shall be the chief executive officer of the Association and shall, subject to the control of the Board, have responsibility for the supervision, direction and control of the business and officers of the Association.

There are two candidates for President-Elect: **Christina Maslach** (University of California, Berkeley) and **Peter Bentler** (University of California, Los Angeles). A write-in option is also available.

- **Treasurer:** The Treasurer serves on the WPA Executive Board. The Treasurer shall have responsibility for financial oversight of the association, to include budget analysis, approval of payments, disbursement of funds, maintaining financial records of the association, and reporting to the Board the state of the overall financial health of the organization.

There is one candidate for Treasurer: **Melinda Blackman** (California State University, Fullerton). A write-in option is also available.

- **Representative-at-Large:** The Representative-at-Large is tasked with recruiting and maintaining an accurate list of members of the Council of Representatives and with serving as the liaison between the Council and the Board. There are two candidates for Representative-at-Large: **Steven Del Chiaro** (John F. Kennedy University) and **Ethan McMahan** (Western Oregon University). A write-in option is also available.

Candidates' statements are provided via links on the ballot. Please read them first then proceed to the ballot. Voting will be open for one month following the release of the ballots. We thank you for your participation!



## Meet WPA's New Staff



**Left to right: Vera Medici, Program Coordinator, Jeff Serfass, Chief Administrator, and Brian Schorr, Deputy Administrator (Not pictured: Cordelia Pearson and Lorraine Grogan, Conference Director)**

**W**e are excited to announce that WPA has acquired the services of **Technology Transition Corporation** (TTC, [www.ttcorp.com](http://www.ttcorp.com)) to provide management support to the organization beginning in late 2017! Based in Washington, DC, TTC has managed over a dozen non-profit academic, professional and industry trade associations and foundations throughout its 32-year history. This arrangement brings several new members to WPA's staff:

### **Jeffrey A. Serfass**

Chief Administrator  
619-677-5990 ext. 312  
[jserfass@westernpsych.org](mailto:jserfass@westernpsych.org)

Jeff serves as WPA's Chief Administrator with overall management responsibility for TTC's support of WPA, including Board of Directors, financial management, and the Convention. Through TTC, he also serves as Executive Director of the California Hydrogen Business Council and is the CEO of two foundations.

Jeff founded TTC in 1986. He previously held positions at the U.S. Department of Energy, Energy Research and Development Administration, and Westinghouse Electric Corporation, and holds Bachelor's and Master's Degrees in Electrical Engineering from Cornell University. In his spare time, he enjoys sailing and playing the saxophone in various settings.

### **Brian Schorr**

Deputy Administrator  
619-677-5990 ext. 309  
[bschorr@westernpsych.org](mailto:bschorr@westernpsych.org)

Brian is responsible for daily operations of the organization and is the main point of contact for member inquiries and assistance. He also provides administrative services to WPA's Board of Directors and website support.

Through TTC, Brian also provides senior management support for the Association of Environmental Engineering and Science Professors, its supporting Foundation, and the International Biochar Initiative. He also serves as Corporate Secretary and Director of Operations for TTC.

Brian joined TTC in September 1999. He holds a B.S. degree in Physical/Environmental Geography from Pennsylvania State University. Brian is an avid ice hockey fan and plays in two recreation leagues near his home.



**Vera Medici**

Program Coordinator  
619-677-5990 ext. 322  
[vmedici@westernpsych.org](mailto:vmedici@westernpsych.org)

Vera works closely with the Board of Directors, senior management, and WPA's event staff to plan and execute the Annual Conventions. She brings to the table almost a decade of event planning experience, as well as an entrepreneurial background in the travel and tourism industry.

Vera joined TTC in 2015. She holds a B.A. in Communication from George Mason University. She enjoys running, and recently completed her first marathon.

**Cordelia Pearson**

Finance Coordinator  
619-677-5990 ext. 303  
[cpearson@ttcorp.com](mailto:cpearson@ttcorp.com)

Cordelia Pearson serves as Finance Coordinator for WPA and TTC's clients. Her duties include managing the organization's financial transactions and producing financial reports for WPA.

Before joining TTC in 2005, Cordelia worked for seven years at the Giant Food Distribution Center. She brings her organizational skills and a strong background in customer and client relations to our team.

**Lorraine Grogan**

Conference Director  
412-398-2182  
[lorraine.grogan@conferencedirect.com](mailto:lorraine.grogan@conferencedirect.com)

For nearly a decade, Lorraine Grogan continues her role as WPA's Conference Director. In this capacity, she handles all hotel related issues, exhibitors, and is available onsite at the registration desk during the Conventions.

We want to hear from you. Please contact us any time to discuss items of interest or concern to you. 2018 will mark our first Convention as WPA staff. We look forward to meeting everyone in April!



JOBS, GRANTS  
AWARDS, INTERNSHIPS  
CHECK IT OUT!

Check the Classified and Announcements Sections on the WPA website for jobs, grants, awards, conferences, and internships.

[westernpsych.org](http://westernpsych.org).

