



NEWSLETTER OF THE WESTERN PSYCHOLOGICAL ASSOCIATION

WESTERN PSYCHOLOGIST

CONVENTION
ISSUE!

FEBRUARY 2019 | VOLUME 35 | NO. 1 | WESTERNPSYCH.ORG

IN THIS ISSUE

WPA 2019 Convention Information4
Registration.4
Hotel and Travel4
Convention Overview4
WPA Convention Invited Speakers6
Wednesday, April 246
Thursday, April 256
Friday, April 267
Saturday, April 278
2019 Statistics Workshop Speakers9
Terman Teaching Conference	10
Thank You to Our Sponsors.11
Enjoying Your Visit to Pasadena	12
WPA News Updates	13
Meet WPA's New Executive Officer	13





JOIN US

99TH ANNUAL CONVENTION

APRIL 25 - 28, 2019 | PASADENA, CA

WPA FILM FESTIVAL • POSTER SESSIONS • SYMPOSIA
SPECIAL PROGRAMS FOR STUDENTS AND TEACHERS
WPA STATISTICS WORKSHOPS

THE LEWIS M. TERMAN TEACHING CONFERENCE
WEDNESDAY, APRIL 24



Terman Teaching Conference Speakers

Robert Bramucci, South Orange
County Community College
District
Donna Garcia, California State
University, San Bernardino
Brooke L. Whisenhunt and Danae
L. Hudson, Missouri State
University
Jeff S. Mio, Cal Poly Pomona
Laura Jones-Hagata, Jennifer St.
John, & Melissa Mann, John F.
Kennedy University
Wendy A. Williams, Central
Washington University

Distinguished Speakers

Peter Bentler, UCLA
Stephanie Cacioppo, The
University of Chicago
William Crano, Claremont
Graduate University
Peter Ditto, University of
California, Irvine
Stewart Donaldson, Claremont
Graduate University
Kim Elsesser, UCLA
Gaithri Ann Fernando, CSU Los
Angeles
Laura Freberg, Cal Poly San Luis
Obispo
Allen W. & Adele E. Gottfried,
Fullerton Longitudinal Study
Diane F. Halpern, Claremont
McKenna College
Lee Jussim, Rutgers
Robert Levine, California State
University, Fresno
Elizabeth Loftus, University of
California, Irvine
Leslie R. Martin, La Sierra
University
Christina Maslach, University of
California, Berkeley
Martin M. Monti, UCLA
V. S. Ramachandran, UCSD
Janina Scarlet, Superhero
Therapy
Henry D. Schlinger, Jr., California
State University, Los Angeles
Aaron R. Seitz, University of
California, Riverside
Annette L. Stanton, UCLA
Jean Twenge, San Diego State
University
Jodie Ullman, California State
University, San Bernardino
Allison Vaughn, San Diego State
University
Philip G. Zimbardo, Heroic
Imagination Project



WPA 2019 Convention Information

REGISTRATION for the 2019 CONVENTION

It is time to complete your convention registration. Links for registration are on the WPA website (westernpsych.org). The convention dates are April 25 -28, with the Terman Teaching Conference on April 24, 2019, and will be held at the Pasadena Convention Center. We encourage you to [pre-register](#) to reduce waiting time at the registration counters and to receive early registration rates! **Early registration closes March 31.**

If you have registered but still have an open invoice, please [go to the website](#) to log in and pay by credit card.

REGISTER NOW



HOTEL and TRAVEL INFORMATION

We will be using the **Hilton Pasadena**, and the **Sheraton Pasadena Hotel** as our main conference hotels. All the poster sessions and meetings will be held at the Pasadena Convention Center.

The Sheraton Pasadena Hotel is located adjacent to the Pasadena Convention Center, and the Hilton Pasadena is 5-10 minutes walk away.

You may reserve rooms at either hotel by using the following link on the WPA website: <https://westernpsych.org/wpa-convention-hotel-travel-information>.

The Sheraton Pasadena will charge a special rate of \$204 per night, and the Hilton Pasadena will charge a special rate of \$199 per night. These special rates will be available until **April 1, 2019** or until the room block is sold out, whichever comes first.

CONVENTION OVERVIEW

Congratulations and thanks to **Program Chair Heidi Riggio** and **co-Chair Steven Frenda** of California State University, Los Angeles along with WPA **President Laura Freberg** for inviting an outstanding group of distinguished psychologists, who will present talks on a variety of topics. The WPA student council, headed by graduate **student representative Allison Mack**, is also contributing to student participation opportunities. There will also be symposia, paper and poster sessions, the WPA Film Festival, statistics workshops, and special workshops and panels for students and teachers.

The complete program will be on the website by mid-March.



Sheraton Pasadena



Hilton Pasadena



CONTINUING EDUCATION CREDITS

We will have APA-approved Continuing Education Credit available for the WPA convention and the Terman Teaching Conference. Information and registration forms will be available by Mid-March on the WPA website. If you wish to obtain CE credit for eligible sessions, you must sign in/out and complete an evaluation form after the session. You must also **register by May 14**, using our online registration system. There is a \$55 fee for a certificate for the WPA convention; the same fee applies to the Terman Teaching Conference, but if someone is attending both the WPA convention AND the Terman Teaching Conference, they only need to purchase one \$55 CE Credit - not two.

Updates will be posted here: <http://westernpsych.org/wpa-convention-ce-credits>

STATISTICS WORKSHOP SCHEDULE

See more details in the convention program. Presenters include:

- **Alexander Etz**, University of California, Irvine
- **Melissa McTernan**, California State University, Sacramento
- **Amanda K. Montoya**, University of California, Los Angeles
- **Andrew R. A. Conway**, Claremont Graduate University

FILM FESTIVAL

The WPA Film Festival showcases new films that span all areas of psychology. The films are organized by content so that related films show consecutively. The [Film Festival](#) runs Thursday to Saturday, from the morning until into the evening. In the program book you will find a list of films for each day at the start of the day's section. There is also an alphabetical listing of all films near the beginning of the program book. While viewing films we ask you to fill out a brief rating form for each film so we can use your ratings to determine the Film Festival winning films. These great films are shown again the following year in the "Encore! Encore!" section of the festival. Films start promptly at the time listed. You are free to come and go as you please. Help yourself to free popcorn while enjoying the films!



**Find us on Facebook,
follow on Twitter at
[@WPAwesternpsych](#)**



**and on Instagram
at [#wpaconvention](#)**



**to connect with
others attending the
convention.**



WPA Convention Speakers

In addition to talks by featured speakers, there will be poster and paper sessions, symposia, and workshops throughout each day, Thursday through Sunday. See below for topics of speakers.

WEDNESDAY, April 24 Terman Teaching Conference

Robert Bramucci, South Orange County Community College District - Technology: The Dual-Edged Sword of Hattori Hanzo

Brooke L. Whisenhunt & Danae L. Hudson, Missouri State University - Targeting Psychology's Most Difficult Concepts to Improve Student Learning

Jeff S. Mio, Cal Poly Pomona - Multicultural Psychology: Suggestions for Classroom Exercises and Topics

Laura Jones-Hagata, Jennifer St. John, & Melissa Mann, John F. Kennedy University - BOP-it: Best Online Practices - Instructional Technology

Wendy A. Williams, Central Washington University - Becoming the Guide on the Side: How I Flipped for Research Methods

THURSDAY, April 25

Kim Elsesser, UCLA - Sex and the Office: The Problems and Potential Solutions

Lee Jussim, Rutgers - Intolerance: No Easy Solution

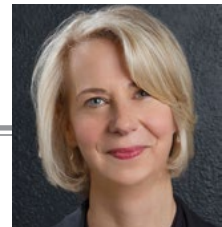
Martin M. Monti, UCLA - Dissolving Into Nothingness: Neural Basis of Consciousness and Its Disorders

Stewart Donaldson, Claremont Graduate University - Beyond the Hype of Optimism and Happiness: A Measured Approach to Understanding and Enhancing Optimal Positive Functioning

Jodie Ullman, California State University, San Bernardino - Equity-Based Learning Strategies: Some Practical Tips

William Crano, Claremont Graduate University - Psychology Can (and Must) Contribute to the Health of the Nation

V. S. Ramachandran, UCSD
Author of The Tell-Tale Brain: A Neuroscientist's Quest for What Makes Us Human



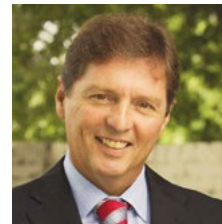
Kim Elsesser



Lee Jussim



Martin M. Monti



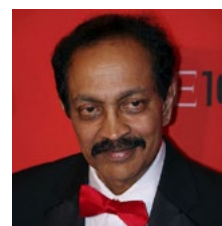
Stewart Donaldson



Jodie Ullman



William Crano



V. S. Ramachandran





Annette L. Stanton

FRIDAY, April 26

Annette L. Stanton, UCLA

I Second That Emotion: The Adaptive Potential of Processing and Expressing Emotions in Stressful Contexts



Christina Maslach

Christina Maslach, University of California, Berkeley

Burnout: What It Is and What to Do About It

Stephanie Cacioppo, The University of Chicago

Evolutionary Theory of Social Connections: Past, Present, and Future



Stephanie Cacioppo

Henry D. Schlinger Jr., California State University, Los Angeles

Thinking Critically About Psychology

Gaithri Ann Fernando, CSU Los Angeles

The Challenges of Global Mental Health: A Trauma-informed Perspective (no photo)

Jean Twenge, San Diego State University

iGen: Teaching the Smartphone Generation



Allen W. Gottfried

Allen W. & Adele E. Gottfried, Fullerton Longitudinal Study

Roots of Human Psychological Development: Infancy to Middle Adulthood Fullerton Longitudinal Study



Aaron R. Seitz

Aaron R. Seitz, University of California, Riverside

The Promise of Brain Training Games



Henry D. Schlinger, Jr.

Peter Bentler, UCLA

Improved Model Tests in Structural Equation Modeling: Reducing Non-replicable Results



Peter Bentler

Laura Freberg, Cal Poly San Luis Obispo

Presidential Address: Harnessing Curiosity for Better Learning (No Felines Were Harmed in this Presentation)



Jean Twenge



Laura Freberg





Janina Scarlet

Saturday, April 27

Janina Scarlet, Superhero Therapy
Superhero Therapy: Healing Trauma through Popular Culture

Peter Ditto, University of California, Irvine
Hot Cognition: Motivated Reasoning about Health, Morality,
Politics & Science



Peter Ditto

Elizabeth Loftus, University of California, Irvine
A Conversation with Elizabeth Loftus

Diane F. Halpern, Claremont McKenna College
Teaching is a Political Act: Who Decides What We Need to
Know?



Elizabeth Loftus

Allison Vaughn, San Diego State University
Social Networks of Sexual Minorities: Quantity and Qualities

Robert Levine, California State University, Fresno
Time, Money and Happiness

Leslie R. Martin, La Sierra University
Professors and People: Nonoverlapping Magesteria?



Diane F. Halpern

Sunday, April 28

Philip G. Zimbardo, Heroic Imagination Project
Creating Evil Versus Creating Heroes



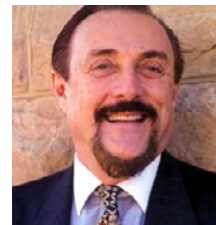
Allison Vaughn



Robert Levine



Leslie R. Martin



Philip G. Zimbardo



2019 Statistics Workshop Speakers



Alexander Etz

Thursday April 25

Alexander Etz, University of California, Irvine
Theory and practice of Bayesian Inference using JASP

This workshop will provide attendees with a friendly, gentle introduction to Bayesian statistics, as well as demonstrate how to perform Bayesian analyses using JASP statistical software with a number of examples. Workshop attendees will come away understanding the why and how of Bayesian estimation and hypothesis testing. This workshop is relevant to any student or researcher who wishes to draw conclusions from empirical data.



Melissa McTernan

Friday April 26

Melissa McTernan, California State University, Sacramento
An Introduction to Linear Mixed Effects Models for Psychological Research

Linear mixed effects models are useful for modeling and drawing inferences about correlated data. In a cross-sectional framework, observations may not be independent if individuals are clustered within groups, such as students within classrooms. In longitudinal data, observations are correlated within the individual. This workshop will cover the basics of linear mixed effects models, including theory and application, model specification/parameterization, and implementation using R statistical software. The presentation will be geared toward students and researchers who are new to or unfamiliar with linear mixed effects modeling, or who are looking for a refresher on the advanced statistical method. A basic understanding of linear regression would be useful.



Amanda K. Montoya

Saturday April 27

Amanda K. Montoya, University of California, Los Angeles
Introduction to Statistical Mediation Analysis

This workshop will provide a hands-on, interactive introduction to statistical mediation analysis, appropriate for those familiar with multiple regression. Statistical mediation analysis is widely used across areas of psychology. It is informative for answering questions of how, why, or through what process some effect occurred. In this workshop we will use the PROCESS macro (freely available for SPSS or SAS) to estimate the effects most informative to mediation: total effects, direct effects, and indirect effects. We will discuss how these models are estimated and how to make inference about the indirect effect. We will discuss simple mediation models (one mediator) and more complex models (multiple mediators). We will discuss how to write about mediation analysis and best practices for conducting this type of analysis.



Andrew R. A. Conway

Sunday April 28

Andrew R. A. Conway, Claremont Graduate University
Introduction to Structural Equation Modeling in R

This workshop is an introduction to structural equation modeling (SEM) in R using the lavaan package. Topics include path analysis, confirmatory factor analysis, and multi-group SEM. A basic understanding of hypothesis testing, model comparison, and multiple regression will be useful. Prior experience with R is helpful but not required. All examples will be presented in R Studio using R Markdown.



TERMAN TEACHING CONFERENCE



The Terman Teaching Conference is a one-day conference with sessions that include presentations and interactive workshops to enhance your teaching abilities. We invite psychology teachers from all levels to join us for a stimulating day of presentations and interactions with other attendees.

This is an excellent value with a **registration fee of only \$25 if you register online by March 31**. Late/onsite registration increases to \$50, so reserve your spot today!

TERMAN TEACHING CONFERENCE

***Renew or
Join WPA Now***

PROFESSIONAL MEMBERSHIP

Student Membership is Included with Student Registration



Thank You to Our Sponsors



CAL STATE LA
CALIFORNIA STATE UNIVERSITY, LOS ANGELES

Host University



Gold Sponsor



Gold Sponsor



Silver Sponsor



Bronze Sponsor



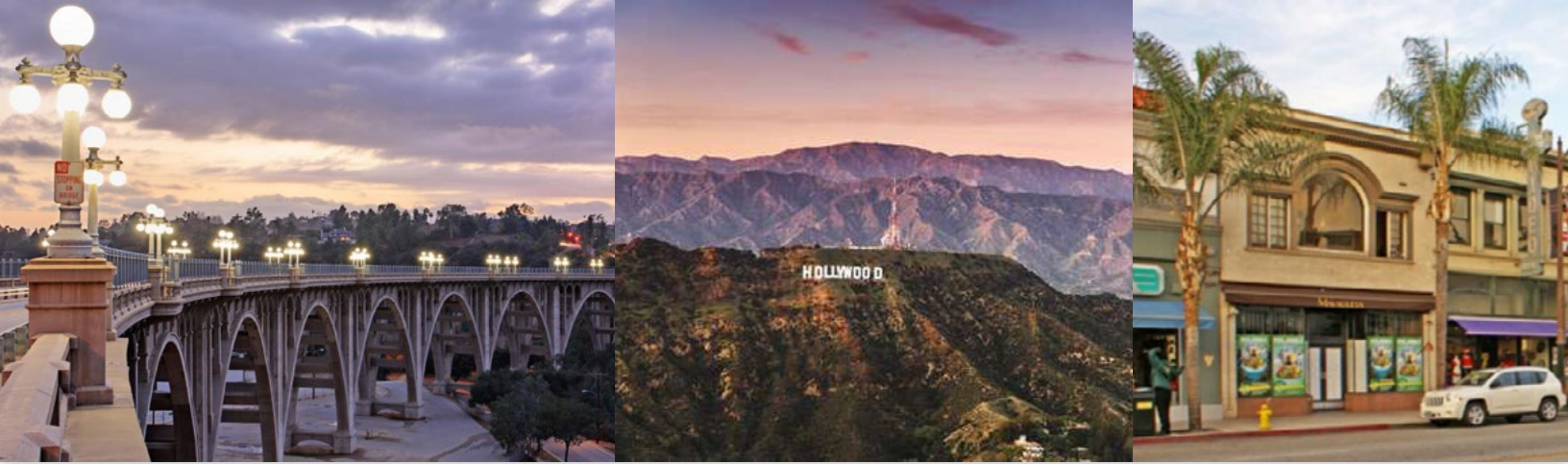
Bronze Sponsor



Friday Evening Dance Party Sponsor



Enjoying Your Visit to Pasadena



Pasadena will never be as bustling as Hollywood or as painfully trendy as the Eastside, but that's exactly what makes this city in the San Gabriel Valley so enjoyable. Set against the San Gabriel Mountains, the town packs in enough things to do without feeling either hectic or sleepy. You can go shopping along Colorado Boulevard, tour turn-of-the-century mansions and hike Echo Mountain, all within the space of an afternoon. Whether you're spending a day or an entire weekend here, you can't go wrong with these 21 essential things to do in Pasadena.

[21 Essential Things to do in Pasadena](#)



Also see the handy links below:

- [Pasadena Activities \(Trip Advisor\)](#) - Includes descriptions of many walking and bike tours, including brewery tours.
- [Things to Do](#) (Lonely Planet)
- [Travel Pasadena](#) (Travel & Leisure)
- [Paseo Colorado Shopping](#) directly across the street
- [Old Town Pasadena](#) is a 5 minute walk with restaurants, bars, clubs
- [Norton Simon Museum](#)
- [The Huntington Library, Art Collections, and Botanical Gardens](#)

Check the Classified and Announcements Sections on the WPA website for jobs, grants, awards, conferences, and internships.

westernpsych.org.

JOBS, GRANTS
AWARDS, INTERNSHIPS
CHECK IT OUT!





2019 WPA Election is Coming Soon!

Professional WPA members will soon receive ballots for the 2019 election. As in previous years, the election will be conducted online – a link will be sent via e-mail that will take you to a secure ballot.

This year, the election will feature two candidates running for President. The candidates are listed alphabetically.

The candidates are as follows:

- **Jon E. Grahe**, Pacific Lutheran University
- **Heidi R. Riggio**, Cal State Los Angeles

Candidates' statements are provided via links on the ballot. Please read them first, then proceed to the ballot. Voting will be open for one month following the release of the ballots. We thank you for your participation!

Meet WPA's New Executive Officer



J. Kris Leppien-Christensen, Ph.D., has served as a Professor of Psychology at Saddleback College in Mission Viejo, CA since 2005 and has been the coordinator of WPA's Terman Teaching Conference since 2016. He completed his associate's degree in liberal arts at Palomar College, his bachelor's and master's in psychology at California State University, San Marcos, and his Ph.D. in psychology at Saybrook University. He is a former regional vice-president and former national president of Psi Beta and was a founding officer of the Psi Chi chapter at California State University, San Marcos. He has also served as a committee member of the Psychology Teachers at Community Colleges (PT@CC), the co-chair of APA's Committee on Associate and Baccalaureate Education (CABE), and as co-chair for the Summit on the National Assessment of Psychology (SNAP). Kris has chaired, presented, and served as a discussant at numerous conventions including WPA, APA, and APS and has been honored with the Wayne Weiten Teaching Excellence Award (Society for the Teaching of Psychology), "Professor of the Year" at Saddleback College, as a nominee for the 2012 Orange County Teachers of the Year, and as a WPA Fellow. Recently, he has served as an associate editor for *Teaching Tips: A Compendium of Conference Presentations on Teaching, 2016-17* and serves as an ad-hoc reviewer for the *Scholarship of Teaching and Learning in Psychology* journal. In his off-time, Kris enjoys travel with his family, often by cruise ship, and occasionally does interviews on podcasts and writes articles for blogs about his adventures.