



NEWSLETTER OF THE WESTERN PSYCHOLOGICAL ASSOCIATION

# WESTERN PSYCHOLOGIST

CONVENTION  
ISSUE!

SPRING 2021 | VOLUME 37 | NO. 2 | [WESTERNPSYCH.ORG](http://WESTERNPSYCH.ORG)

# IN THIS ISSUE

2021 Convention Fast Approaching . . . . .	3
Early Conference Registration Ending Soon . . . . .	4
2020 Award Recipients . . . . .	5
2021 Convention Distinguished Speakers . . . . .	9
WEDNESDAY, April 28 . . . . .	9
THURSDAY, April 29 . . . . .	10
FRIDAY, April 30 . . . . .	11
Pandemic-Related Presentations . . . . .	12
Continuing Education for 2021 Conference . . . . .	13
WPA Announcements . . . . .	14
Psi Chi Programming . . . . .	15





## ***“THE BIG ISSUES”***

**APRIL 28 - 30, 2021 | REGISTRATION IS OPEN**

[CLICK HERE](#)

# 2021 CONVENTION FAST APPROACHING

**U**nder the stewardship of our programming chair, **Kimberly A. Barchard** (University of Nevada, Las Vegas), the Western Psychological Association is gearing up for another exciting annual conference. This year's conference will be virtual, using the X-CD platform, and will run from 9 a.m. Wednesday, April 28th through 4 p.m. on Friday, April 30th. The WPA Conference on Teaching will run each morning concurrently with the conference. The tentative program can be viewed online by clicking the orange button below. The statistics and teaching program speakers will be added shortly.

We are excited to announce that we have added an additional live streaming room and additional opportunities to interact with one another. Each presentation will now have a virtual chat room allowing presenters and attendees to interact live with one another through a video chat feature. We have also asked each presenter to be present during their scheduled presentation time to increase the opportunity for such interaction. Attendees will also have the opportunity to ask questions of each distinguished speaker during their live presentations.

If you are unfamiliar with the virtual conference platform that we used in October, you may view the video on *Navigating the Virtual Conference* online by clicking the orange button below.

[2021 TENTATIVE PROGRAM](#)

[NAVIGATING THE WPA VIRTUAL CONFERENCE](#)

PLATINUM SPONSOR

**APA Digital Learning**



## Early Conference Registration Ending Soon

**Early registration closes on March 31, 2021**, which is also the last day to renew one's professional membership. In addition, those who register by March 31, 2021 and who attended the 2020 conference are eligible for a \$45 discount on their 2021 registration.

The registration fees remain unchanged and are as follows:

### Early Registration Fees (prior to April 1, 2021)

WPA Professional Member (must renew by March 31, 2021)	\$90
Professional Non-Members	\$165
Students	\$90

### Regular Registration Fees (beginning April 1, 2021)

WPA Professional Member (must renew by March 31, 2021)	\$140
Professional Non-Members	\$230
Students	\$120

Because this is an online/virtual event, we are unable to offer a spouse, partner, or guest rate at this time.

[CONVENTION REGISTRATION](#)



**Find us on Facebook,**

**follow on Twitter at @**



**WPAwesternpsych and**

**on Instagram at #wpa-**

**convention to connect**



**with others attending**

**the convention.**

***Renew or  
Join WPA Now***

[JOIN OR RENEW MEMBERSHIP](#)

Student Membership is Included with Student Registration



## 2020 Award Recipients



SOCIAL RESPONSIBILITY AWARD

**STANLEY SUE**

**CHRISTOPHER J. KOCH**

OUTSTANDING TEACHING AWARD

**GEORGE SLAVICH**

ENRICO E. JONES AWARD FOR RESEARCH IN  
PSYCHOTHERAPY AND CLINICAL PSYCHOLOGY

**TIFFANY M. ARTIME**

LIFETIME ACHIEVEMENT AWARD

**ROBERT LEVINE**

DISTINGUISHED SERVICE AWARD

**SHARI YOUNG KUCHENBECKER**



## SOCIAL RESPONSIBILITY AWARD

### STANLEY SUE



**Dr. Stanley Sue** is an emeritus Distinguished Professor of Psychology at both Palo Alto University and the University of California, Davis. He received his B.S. from the University of Oregon and Ph.D. from the University of California,

Los Angeles. Dr. Sue has been recognized as one of the most prominent leaders in multicultural studies. His research on mental health service delivery to minority groups has resulted in systems changes in the areas of public policy and service delivery on national, state and local community levels. More recently, his work has focused on the critical examination of paradigms that psychology uses, and how these affect the study of ethnic minority and cultural diversity issues. As a result of his research, he has participated in a number of policy-oriented activities, including being an invitee to the White House Conference on Mental Health, and Science Editor for the U.S. Surgeon General's Report entitled "Mental health: Culture, Race, and Ethnicity." Dr. Sue has received a number of very prestigious awards, including Lifetime Achievement Awards from the Western Psychological Association and the Society for the Psychological Study of Culture, Ethnicity, and Race (American Psychological Association (APA) Division 45). APA Division 12 established "The Stanley Sue Award for Distinguished Contributions to Diversity in Clinical Psychology," to recognize a psychologist who has made remarkable contributions to the understanding of human diversity.

## SOCIAL RESPONSIBILITY AWARD

### CHRISTOPHER J. KOCH



**Dr. Christopher Koch** has worked tirelessly on behalf of families and children. One of the things that Dr. Koch developed was a concussion assessment program (CAP), which he developed for middle school

athletic programs and youth at no cost for those being tested. To do this, he established community partnerships with the Park and Recreation District, as well as with medical providers. The CAP provides free baseline and post-injury testing and educational materials to athletes and parents regarding prevention and treatment. He and his students have provided over 1500 assessments to students, many of whom were low income. Dr. Koch also developed a program called "The Zone." The Zone provided STEM education during an after-school program for elementary school students. The goal of this program is to engage students in neuroscience. This program, like CAP, has been offered in low-income neighborhoods. Dr. Koch has also made significant contributions to the regional and national levels in teaching of psychology. He has been a staunch supporter of undergraduates in psychology. He served two terms as the Western Region Vice-president of Psi Chi. Later, as the National President of Psi Chi, he developed the Psi Chi statement on Diversity and developed the Albert Bandura Award for the outstanding graduate student. Dr. Koch's contributions have been impressive. He has contributed to families and children, students and faculty at the university level, to WPA as the Western Regional Vice President, and nationally as the President of Psi Chi. It is with pleasure and pride that we honor him with the WPA Social Responsibility Award.



## OUTSTANDING TEACHING AWARD

### GEORGE SLAVICH



**Dr. George Slavich** is an Associate Professor of Psychiatry and Biobehavioral Sciences, a research scientist at the Cousins Center for Psychoneuroimmunology, and Director of the Laboratory for Stress Assessment and Research at UCLA. Dr. Slavich has mentored more than 175 students, many of whom have co-authored scientific papers and presentations with

him. Early in his career, he founded the Stanford Undergraduate Psychology Conference, Society of Clinical Psychology's Section for Graduate Students and Early Career Psychologists, and our very own Western Psychological Association Student Council. Since 2001, he has received a total of 36 major awards, 11 of which have been for outstanding teaching and mentorship. These teaching awards include the McKeachie Graduate Student Teaching Excellence Award from the Society for the Teaching of Psychology and the highly coveted Raymond D. Fowler Award for Outstanding Contribution to the Professional Development of Graduate Students from the American Psychological Association. Dr. Slavich also recently received the Outstanding Undergraduate Student Teaching Award, Outstanding Graduate Student Teaching Award, and Outstanding Research Mentor Award from the Department of Psychiatry and Biobehavioral Sciences at UCLA.

## ENRICO E. JONES AWARD FOR RESEARCH IN PSYCHOTHERAPY AND CLINICAL PSYCHOLOGY

### TIFFANY M. ARTIME



**Dr. Tiffany Artime** is an assistant professor at Pacific Lutheran University. Her research interest is in the area of traumatic stress. She is completing a two-year Patient Centered Outcomes Research Institute (PCORI) funded project collaboration between the University of Washington and Pacific Lutheran University. For

this project, she has developed a stakeholder learning community composed of college clinicians, administrators, student life professionals, community members, and students who are investigating evidence-based, trauma-focused treatments for use in university counseling centers. As part of this work she hosted a training that helped to inform the adaptation of Skills Training in Affect and Interpersonal Regulation (STAIR) to the college counseling setting, and she is developing a manual that will be used by campus-based mental health professionals. She and her collaborators have created an "Integrated Continuum of Care" stepped-care model that universities can use to establish various levels of care across campus services for the mental health needs of trauma-exposed students. Besides teaching six classes a year and having a private practice, she engages students in her research, which is timely and bridges the gap between her scholarly interests and clinical training. It is with pleasure and pride that we honor her with the Enrico E. Jones Award for Research in Psychotherapy and Clinical Psychology.



## DISTINGUISHED SERVICE AWARD SHARI YOUNG KUCHENBECKER

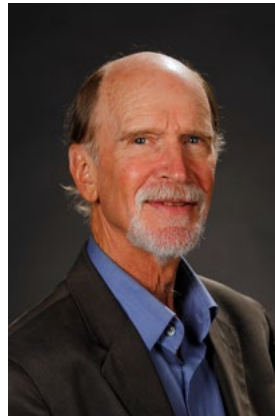


**Dr. Shari Young Kuchenbecker** is the Associate Director and Co-Founder of the Western Positive Psychology Association (WPPA) at Claremont Graduate University, an organization dedicated to supporting student/faculty research within and between educational institutions, building the science of positive psychology. She received her bachelor's degree

from Stanford University and Ph.D. in developmental psychology from UCLA. She began her research/teaching career at Chapman University, where she was awarded tenure at the age of twenty-nine.

Dr. Kuchenbecker first presented at Western Psychological Association (WPA) in 1974 and, over the years, she has coauthored many WPA poster and paper sessions with her students. In 2018, she served as the WPA Student Council Advisor. For the past 5 years, Dr. Kuchenbecker has volunteered at the WPA Annual Conference as the Event Photographer. She has captured our vibrant students and their proud faculty beaming at her camera. She loves being a part of WPA, and WPA is proud of her and her photographs!

## LIFETIME ACHIEVEMENT AWARD ROBERT LEVINE



**Dr. Robert "Bob" Levine** is recognized for his contributions to the field of psychology, his students, and to the community. Bob passed on June 22, 2019, at age 73. He received a bachelor's degree in Psychology from the University of California, Berkeley, a master's degree in clinical psychology from

Florida State University, and a doctoral degree in personality/social psychology from New York University. He was appointed to a tenure track position in the Department of Psychology at California State University, Fresno, in 1974 until he retired, and was awarded emeritus status, in 2008. Fresno State lowered its flag in his memory on July 2, 2019. Dr. Levine was an outstanding, well-loved teacher. In 2007, Bob received the WPA Outstanding Teaching Award, and he also received the California State University, Fresno, Provost's Excellence in Teaching Award. His research was creative and broadly applicable to a variety of fields. He published numerous articles and five books, including *A Geography of Time*, which was featured in *Newsweek*, the *New York Times Magazine*, *CNN*, *NPR's All Things Considered*, and elsewhere around the world. He was a Fellow in both WPA and the American Psychological Association. Dr. Levine was deeply devoted to the university. He served admirably as Chair of the Department of Psychology, and as Associate Dean for the College of Science and Mathematics. He also represented the Department of Psychology well in the community, serving on numerous boards, most notably for the Poverello House. Bob served as a role model for friends and family around the world, living a rich life as an exemplary university professor and involved community member. He infused the Psychology Department with a spirit of kindness, openness, and curiosity. His office door, decorated with amusing cartoons and community-advocacy stickers, was always open, inviting visits from students and faculty alike. A profound instructor, teaching us by example how to live life deeply and with curious eyes, Bob's influence will reverberate for many years.





# Distinguished Speakers

In addition to talks by featured speakers, there will be poster and paper sessions, symposia, and workshops throughout each day, Wednesday through Friday. See below for topics of speakers.



Christina Maslach

## WEDNESDAY, April 28

A CENTURY OF WOMEN LEADERS IN WPA

**Christina Maslach**, University of California, Berkeley

CHANGING THE CONVERSATION ABOUT CLIMATE CHANGE

**Jessica Thompson**, Northern Michigan University

FAIRNESS, EXTREMISM, AND CONFLICT RESOLUTION

**Kees van den Bos**, Utrecht University

HABILITATION, DISHABILITATION, AND REHABILITATION: IMPLICATIONS FOR LEARNING DISABILITIES

**Henry D. Schlinger, Jr.**, California State University, Los Angeles

HACK THE CONVENTION

**Terry Cronan**, San Diego State University  
**Alyson Burns-Glover**, Pacific University

HOW CAN PSYCHOLOGY CONTRIBUTE TO SUSTAINABILITY?

**Jiaying Zhao**, University of British Columbia

MY JOURNEY THROUGH MULTICULTURAL PSYCHOLOGY

**Jeffery Mio**, California State Polytechnic University, Pomona

THE DRAGONS OF INACTION: MOVING TOWARD SOLUTIONS

**Robert Gifford**, Department of Psychology and School of Environmental Studies, University of Victoria

THE RISE OF IRRESISTIBLE TECHNOLOGY: WHY WE CAN'T STOP WATCHING, CLICKING, SCROLLING, AND POSTING

**Adam Alter**, New York University



Jessica Thompson



Kees van den Bos



Henry D. Schlinger, Jr.



Terry Cronan



Alyson Burns-Glover



Jiaying Zhao



Jeffery Mio



Robert Gifford



Adam Alter



Nour Kteily

## THURSDAY, April 29

BELIEFS ABOUT WHAT DISADVANTAGED GROUPS  
WOULD DO WITH POWER SHAPE ADVANTAGED  
GROUPS' (UN)WILLINGNESS TO RELINQUISH IT

**Nour Kteily**, Kellogg School of Management,  
Northwestern University



Jaye Van Kirk



William Crano

CAN WE TALK? EXPERIMENTS ON RESISTANCE TO  
UNEXPECTED COMMUNICATIONS FROM A FELLOW  
POLITICAL PARTISAN

**William Crano**, Claremont Graduate University



Wayne Weiten

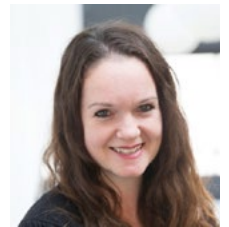
CROSS-CULTURAL VALIDITY: APPLICABILITY TO  
RESEARCH, PRACTICE, & TRAINING

**Lawrence H. Gerstein**, Ball State University



Lawrence H. Gerstein

FRIENDS TAKING ENEMIES' PERSPECTIVE  
**Kristin Laurin**, University of British Columbia



Karen Douglas

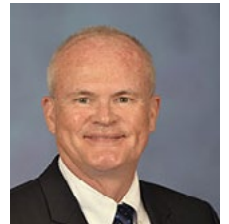
I WASN'T TRAINED FOR THAT  
**Chris Koch**, George Fox University



Kristin Laurin

PREPARING FOR CLIMATE CHANGE: THE ROLE OF  
PSYCHOLOGY

**Susan Clayton**, The College of Wooster



Paul A. Nelson

THE LAST LECTURE  
**Carrie M. Margolin**, The Evergreen State College  
(Emeritus)

**Jaye Van Kirk**, San Diego Mesa College  
**Wayne Weiten**, University of Nevada, Las Vegas



Chris Koch

THE PSYCHOLOGY OF CONSPIRACY THEORIES  
**Karen Douglas**, University of Kent, United Kingdom



Dale Berger

THE SOCIAL CONTEXT OF MENTORING: EMPOWERING  
UNDERGRADUATE PSYCHOLOGY MAJORS FROM  
UNDERREPRESENTED AND MARGINALIZED GROUPS

**Paul A. Nelson**, University of Nevada, Las Vegas



Susan Clayton

THINGS I LEARNED WHILE TEACHING DATA ANALYSIS  
**Dale Berger**, Claremont Graduate University (Emeritus)



## Friday, April 30



Norweeta G. Milburn

ADDRESSING DISPARITIES AND IMPROVING EQUITY AS A RESEARCH  
COMMUNITY PSYCHOLOGIST: SQUARE PEG IN A ROUND HOLE

**Norweeta G. Milburn**, Ph.D.

CONVERTING CRUEL PRISON GUARDS INTO COMPASSIONATE  
HEROES

**Philip Zimbardo**, Heroic Imagination Project



Philip G. Zimbardo

DISSEMINATING TRAUMA-FOCUSED TREATMENT ON COLLEGE  
CAMPUSES THROUGH STAKEHOLDER ENGAGEMENT

**Tiffany Arttime**, Pacific Lutheran University

INFANTS' AND CHILDREN'S FEMALE FACE PROCESSING EXPERTISE:  
HOW AND WHY IT MANIFESTS

**Jennifer L. Rennels**, Professor, Department of Psychology/Adjunct  
Professor, Office of Medical Education, School of Medicine, University of  
Nevada, Las Vegas



Tiffany Arttime

RESPONDING TO MICROAGGRESSIONS IN PSYCHOTHERAPY

**Noelle Lefforge**, University of Nevada, Las Vegas

SMARTPHONES AND MENTAL HEALTH: HOW BIG IS THE LINK, AND IS  
USING LINEAR R ENOUGH TO UNDERSTAND IT?

**Jean Twenge**, San Diego State University



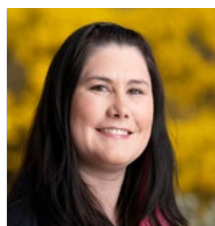
Jennifer L. Rennels

THE ESSENTIAL ROLE OF PSYCHOLOGY IN BUILDING A SUSTAINABLE  
WORLD

**Christie Manning**, Macalester College

THE PSYCHOBIOLOGY OF SOCIAL SAFETY, INFLAMMATION, AND  
VIRAL IMMUNITY: DURING THE COVID-19 PANDEMIC AND BEYOND

**George M. Slavich**, University of California, Los Angeles



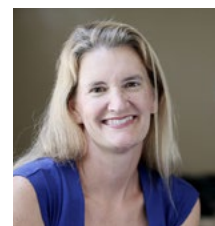
Noelle Lefforge

THE PSYCHOLOGY OF FAKE NEWS

**Rainer Greifeneder**, University of Basel, Switzerland

WILL YOU HEAR ME NOW? VOICES FROM PAST MENTORS STILL  
RELEVANT TO CURRENT EDUCATIONAL ISSUES

**LeAnn Grogan Putney**, University of Nevada, Las Vegas



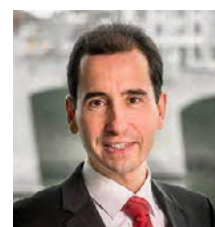
Jean Twenge



Christie Manning



George M. Slavich



Rainer Greifeneder





## Pandemic-Related Presentations

Nearly 120 pandemic-related papers, posters, symposia, and distinguished talks including the following sample of talks:

### **Distinguished Speakers:**

THE PSYCHOBIOLOGY OF SOCIAL SAFETY, INFLAMMATION, AND VIRAL IMMUNITY: DURING THE COVID-19 PANDEMIC AND BEYOND (George M. Slavich, University of California, Los Angeles)

### **Symposia:**

METAPHORS ARISING DURING THE TRUMP ADMINISTRATION: ADJUSTMENTS MADE DUE TO COVID-19 (Chair: Jeffery S. Mio, California State Polytechnic University, Pomona)

#HATEISAVIRUS: ASIAN AND ASIAN AMERICAN COLLEGE STUDENTS' EXPERIENCES OF RACISM DURING THE COVID-19 PANDEMIC (Chair: Paul Youngbin Kim, Seattle Pacific University)

CARING FOR OUR CAREGIVERS (Chair: Lynn Wilcox, CSU Sacramento)

THE MEASUREMENT & ASSESSMENT OF COVID-19 INFLUENCES ON MENTAL HEALTH IN EMERGING ADULTHOOD (Chair: Daniel Andre Ignacio, California State University, Fullerton)

THE COVID-19 AROUND THE WORLD (USA, ITALY, TAIWAN, LGBTQ COMMUNITY) (Chair: Lynette Bikos, Ph.D. ABPP, Seattle Pacific University)

### **Papers:**

EXISTENTIAL THREAT, STATUS QUO DISRUPTION, AND SUPPORT FOR AUTHORITARIANISM DURING A DEADLY PANDEMIC (Christine Reyna, DePaul University)

YOU CAN'T ALWAYS GET WHAT YOU WANT AND IT HURTS: LEARNING DURING THE PANDEMIC (Arianna Stone, Oregon State University)

EXAMINING THE EFFECT OF DEMOGRAPHIC AND SOCIO-POLITICAL FACTORS ON THE DYNAMICS OF COVID-19 IN CALIFORNIA (Victor Joya, California Baptist University)

COVID-19 EMERGENCY SWITCH TO ONLINE MODALITY; A COMPARISON OF ONLINE VS FACE-TO-FACE STUDENTS (Kathryn Damm, Saddleback College)

IMPACT OF COVID-19 ON COMMUNITY HEALTH WORKERS: SEMI-STRUCTURED INTERVIEWS (Diane Marin Loma Linda University)

FOOD INSECURITY AND COVID-19: AN ESCALATING PANDEMIC (Grace Fowler, Alliant International University-Los Angeles, CSPP)

EVALUATING THE IMPACTS OF TRUST IN GOVERNMENT ORGANIZATIONS AND FAMILIAL HEALTH

INSURANCE STATUS ON HEALTH-RELATED QUALITY OF LIFE IN COLLEGE STUDENTS DURING COVID-19 (Kayla Garner, California State University Fullerton)

UNDERSTANDING COVID-19 THROUGH A NEOLIBERAL FRAMEWORK (Sukhman Rekhi California State University, Long Beach)

HOW SARS-COV-2 AND COMPARABLE PATHOGENS CAN BE DEFEATED IN A SINGLE DAY: DESCRIPTION AND MATHEMATICAL MODEL OF THE CARRIER SEPARATION PLAN (CSP) (Robert Epstein American Institute for Behavioral Research and Technology)

PHYSICAL ACTIVITY AND MENTAL HEALTH DURING THE COVID-19 PANDEMIC (Marianna Kaneris, Arizona State University)

SLEEP AND HEALTH IN FEMALE UNDERGRADUATE STUDENTS DURING THE COVID-19 PANDEMIC: DOES ETHNICITY MATTER? (Katherine Karayianis, University of California, Irvine)

IN THEIR OWN WORDS. STUDENT REFLECTIONS ON RAPID REMOTE COURSE DELIVERY (Victoria Cross, University of California, Davis)



# WPA CE Program

The Continuing Education program at the WPA Annual Convention is a co-sponsorship between the Western Psychological Association and the Department of Clinical Psychology at Seattle Pacific University\*. The program will be WPA CE offered in a home study format; we are anticipating at least 20 participating sessions available on-demand. Because of the many steps required to document eligibility of a session for CE, we will not have a complete list of programs in advance of WPA's start.

### Answers to your FAQs:

#### How do I enroll?

- Registration involves regular the regular WPA registration fee PLUS the \$55 CE fee. Please add the CE option to your online registration for WPA.
- Approximately 24 hours prior to the start of the convention, paid registrants will receive a password-protected list of Qualtrics survey links to each of the CE-approved events. Those who register after the convention begins will receive the list within 48 hours of registering – we encourage advanced registration!

#### What do I do?

Live or on-demand through August 31, 2021, open the associated Qualtrics survey while you access/watch the CE event from the WPA Convention website. Answer the “quiz questions” (written for the purpose of attendance verification), evaluation items, and attendance attestation items. Passing 75% of the items results in a CE Certificate that is automatically and instantaneously generated and e-mailed to you.

#### If I have questions?

E-mail [apa\\_ce@spu.edu](mailto:apa_ce@spu.edu) and/or stop at Seattle Pacific University's exhibit at WPA; a member of the CE team will be happy to help you.

# APA Digital Learning

\*The Department of Clinical Psychology at Seattle Pacific University is approved by the American Psychological Association to sponsor continuing education for psychologists. The Department of Clinical Psychology at Seattle Pacific University maintains responsibility for this program and its content.







### Upcoming Election

The 2021 election of Board officers will begin on April 1st, 2021. All current members will receive a ballot and all ballots must be cast by April 21st, 2021. Three positions will appear on the ballot: President-Elect, Representative at Large, and Treasurer. Membership renewal closes on March 31, 2021, so please renew your membership if you would like to be eligible to vote.

### New Secretary Appointed

The Western Psychological Association is happy to announce that Kelly Ann Bennion, Ph.D., Ed.M. has been appointed to the Board as Secretary. Kelly was appointed to the Board in late 2020 as interim Secretary and was reappointed at the Board's annual meeting to continue in the position.



### WPA Is Looking for a New Executive Office

The Western Psychological Association is seeking individuals who might be interested in becoming the next Executive Officer when the position opens on July 1, 2021. The position announcement follows and interested individuals should email with a letter of interest and their vita.

The Western Psychological Association seeks to hire an Executive Officer (EO) beginning July 1, 2021. The EO serves as ex-officio (non-voting) member of the WPA Board of Directors and is appointed by the Board for a renewable three-year term. This is a part-time position and the hours vary seasonally, with some months (e.g., before & during the April convention) requiring a heavy time commitment. Primary responsibilities of the EO involve running the regular functions of the WPA organization; coordinating the annual WPA convention in collaboration with a professional conference planner; and serving as Editor of the Western Psychologist newsletter and webmaster of the WPA website.

#### Desired Qualifications:

- PhD in Psychology or a related field
- Knowledge of WPA
- Conscientious, well-organized, and willing to learn new skills
- Some facility with financial and database management software
- Demonstrated skill in working well with other people
- Experience working with websites and social media

Please email vitae, statement of interest in/qualifications for the EO position, and two letters of recommendation to the WPA EO Search Committee, [admin@westernpsych.org](mailto:admin@westernpsych.org). To assure full consideration, application materials should be received on or before May 1, 2021. However, applications will be accepted until a suitable candidate is found.



## Psi Chi Programming

### Psi Chi Distinguished Speaker

Dr. L Mark Carrier, CSU Dominguez Hills (Schedule to be Determined)

### Psi Chi Diversity Speaker

Dr. Darren Bernal, University of North Carolina Asheville (Schedule to be Determined)

### Psi Chi Spotlight on Students

Dr. Ngoc Bui, Psi Chi President Elect (Schedule to be Determined)

### How to get into Graduate School

Roberta Miranda, Melissa Wilson and Jill Yamashita (Schedule to be Determined)

### Psi Chi Poster Session

Friday, April 30th at 9 a.m.

## WPA Commemorating 100 Years Book

***To commemorate our 100th anniversary, we've created this beautiful chronicle of the history of the WPA.***

### What's Inside

- Timeline of milestones in psychology and world events
- Biographies of each past president
- Overview of each convention
- Featured Luminaries in Psychology
- Two-page spreads that highlight advances in the field
- And much more!

A lasting memory of our 100 year anniversary

**\$55** (includes tax, fulfillment and shipping)

Purchase with PayPal:

**PURCHASE NOW**

To commemorate our 100th anniversary, we've created this beautiful chronicle of the history of the WPA.

Hold History in your Hands

**What's Inside**

- Timeline of milestones in psychology & world events
- Biographies of each past president
- Overview of each convention
- Featured Luminaries in Psychology
- Two-page spreads that highlight advances in the field
- ...And much more!

**PURCHASE TODAY**  
**\$55** (includes tax, fulfillment and shipping)

Purchase with PayPal

This book was a year in the making and contains over one hundred pages of history, pictures, timelines and highlights of the most important people, experiments, events and advances in the field. You might even find yourself in one of the many convention photos!

WPA President, Dr. Christina Maslach